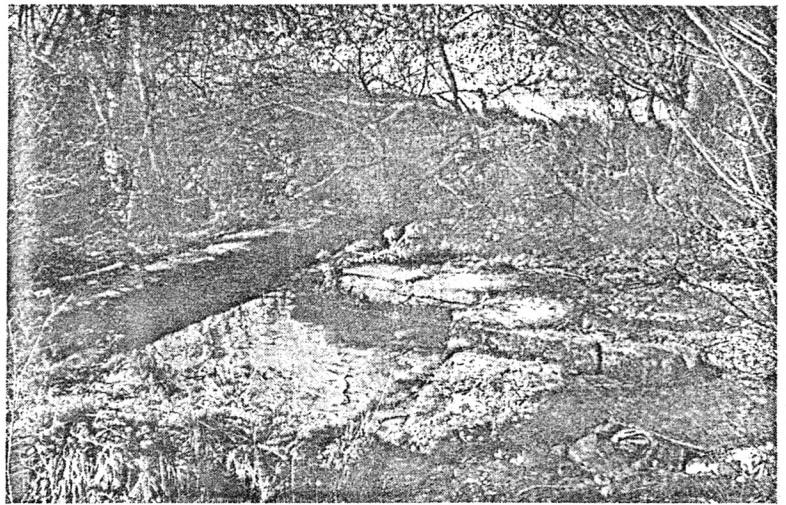


SHEEPWASH NEGLECTED

SIR,—Sheepwashes come in all shapes and sizes, and I have yet to see a comprehensive study of them. A very attractive small specimen is on the brook above Upper Redbrook, about three miles south east of Monmouth and just in Gloucestershire (grid reference SO 546 107). As my photograph, taken in 1971, shows, it is constructed of stone and is small and shallow, being about 8ft by 9ft, and perhaps 18in deep when full of water. It is marked as a sheepwash on the 25in Ordnance Survey map and was possibly quite old a century ago.

Unfortunately this delightful old feature has recently been spoilt by a dump of rocky rubble beside it, and it is now in bad repair.—D. GORDON TUCKER, 26 Twalling Road, Barnet Green, Worcestershire.



A DISUSED SHEEPWASH AT UPPER REDBROOK, IN GLOUCESTERSHIRE

See: Sheepwash Neglected