

extract from article by W. McCreath

# THEIR WASTED CAME FROM MANY PARTS

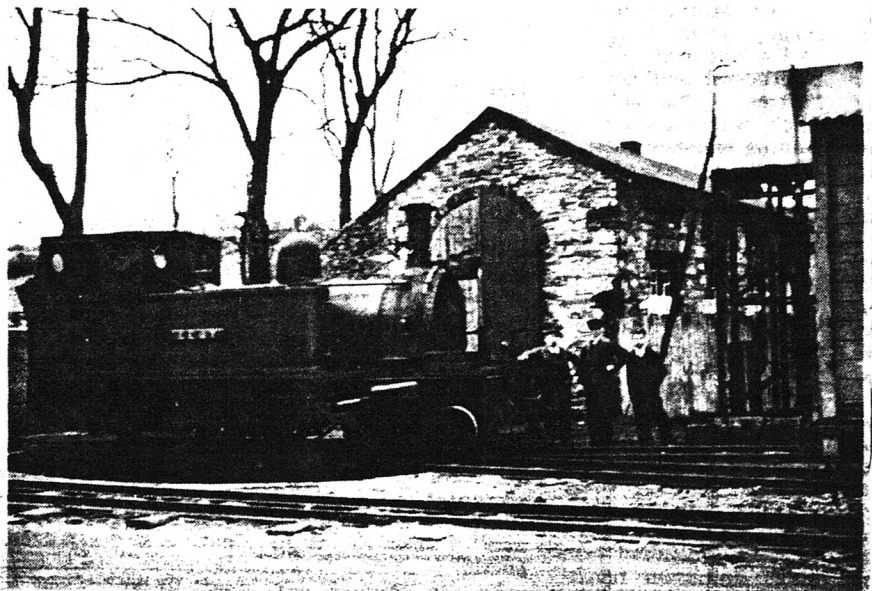
## Along the rails of Munster

### DR. D. GORDON TUCKER

Dr. Tucker is a retired Professor of Electrical Engineering at Birmingham University, and a member of the Narrow Gauge Railway Society. His visit to Ireland was in April 1936. He covered the Cork-Bantry run of the old CBSCR and the narrow-gauge line between Skibbereen and Schull.

In the latter journey his locomotive was No. 3s ("Kent" — named after Thomas Kent, shot in Cork Barracks in 1916).

Dr. Tucker has much information on the early days of the line which it is hoped to publish in a future issue of *Narrow Gauge (Britain)*.



Schull and Skibbereen loco "Kent" with railway staff in Schull station 1936 —(Dr. G. Tucker)



Ballydehob station in 1936

—(Dr. G. Tucker)