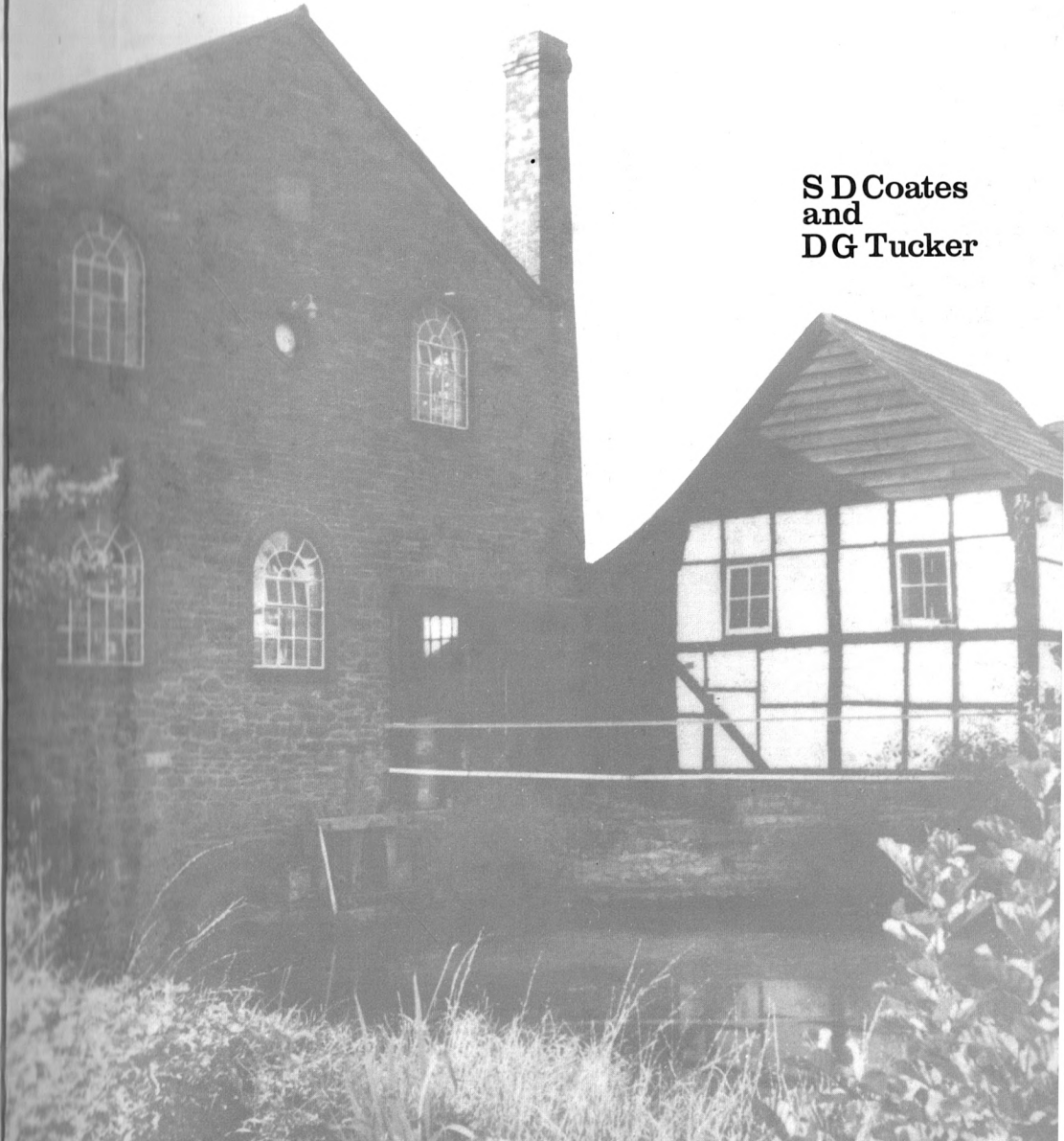
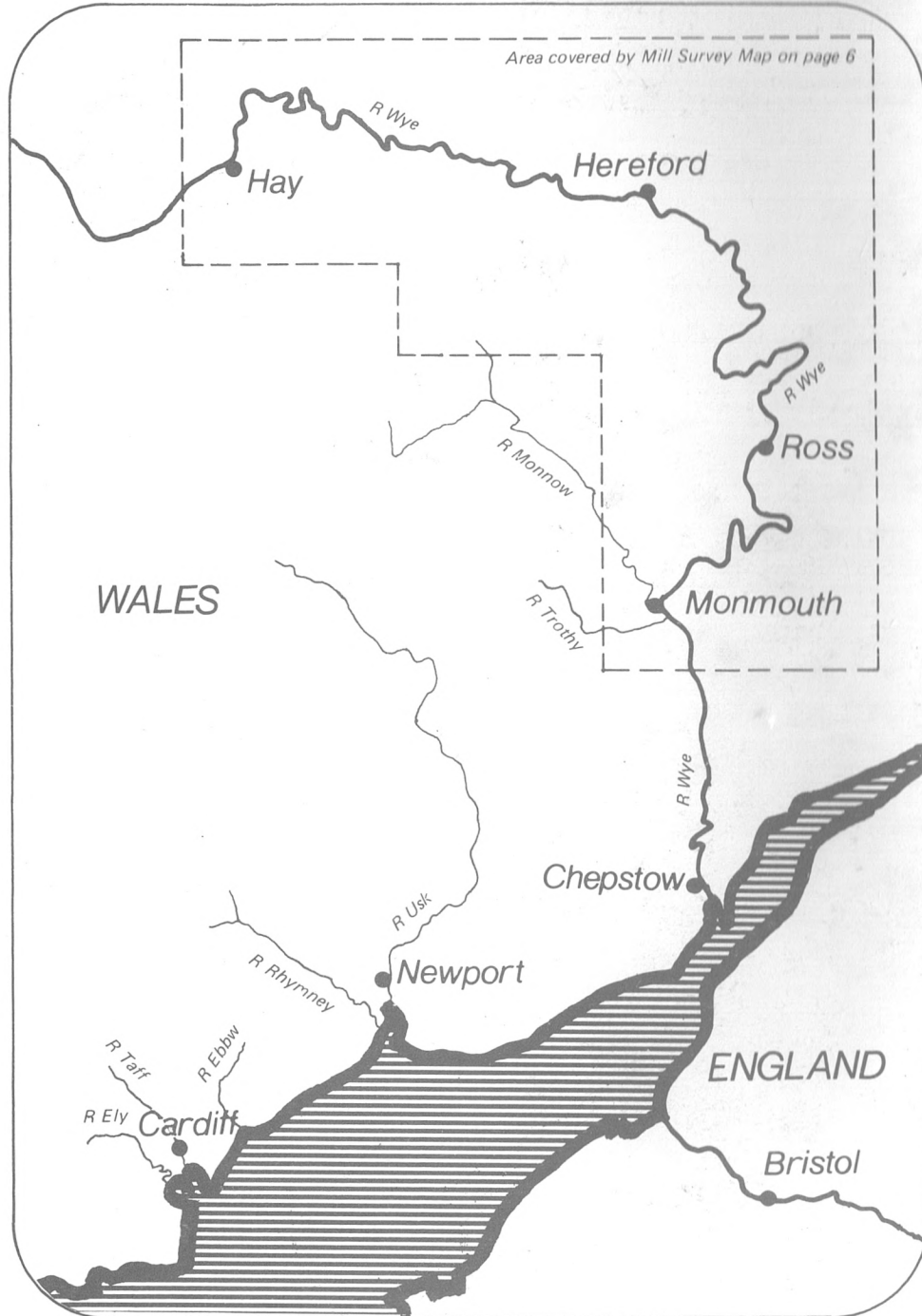
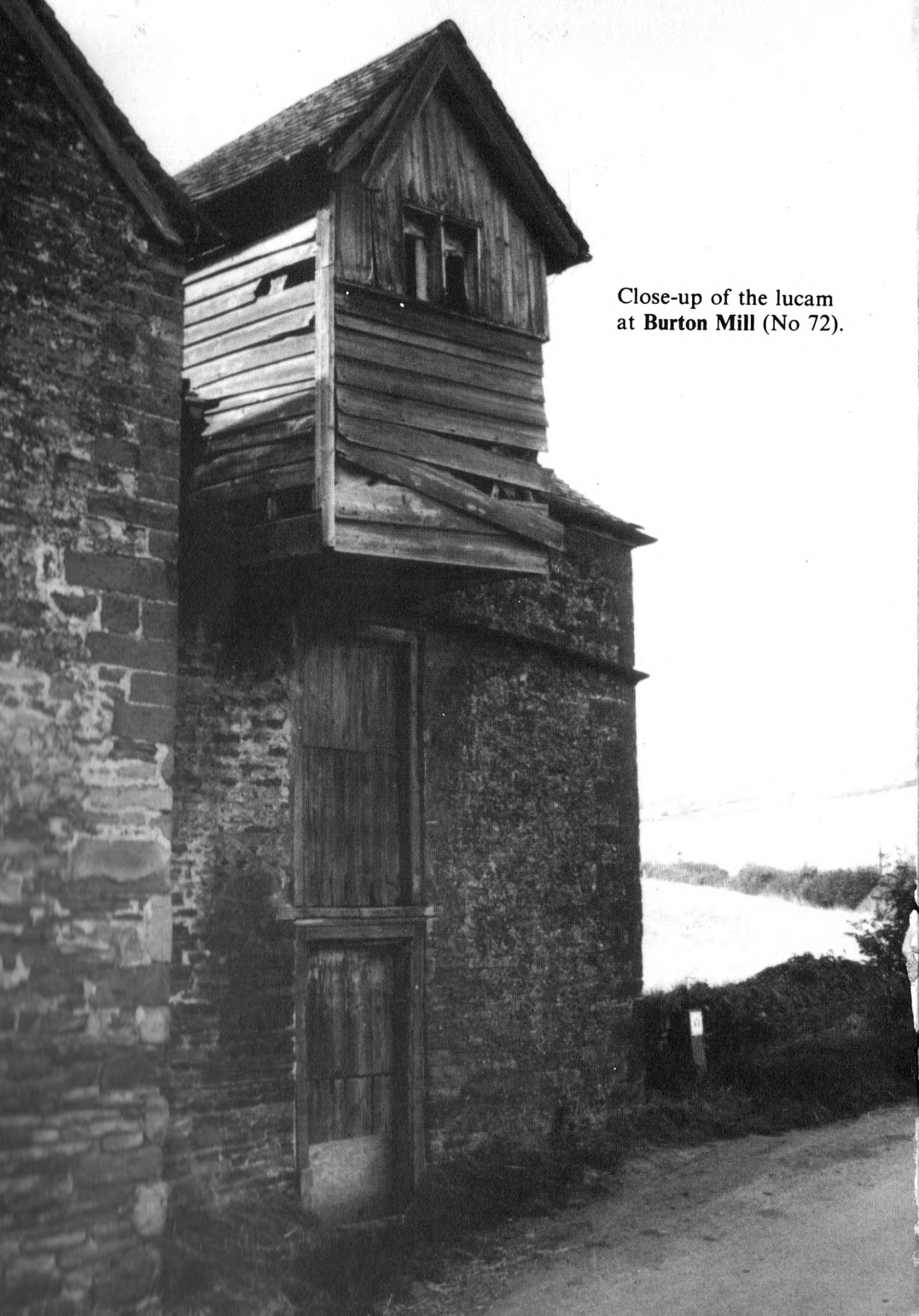


# Water-mills of the Middle Wye Valley

The River Wye and its tributaries

S D Coates  
and  
D G Tucker





Close-up of the lucam  
at **Burton Mill** (No 72).

---

# Water-mills of the Middle Wye Valley

The River Wye and its tributaries  
Monmouth — Hereford — Hay

---

S D Coates  
and  
D G Tucker

---

Monmouth District Museum Service

---

Cover photograph: **Bill Mill** (number 60)

Published by the  
Monmouth District Museum Service  
Monmouth Museum, Monmouth, Gwent  
Designed by Roy Day FSIAD  
Typeset by Moorland Publishing Co Ltd  
Mill sketches by Grace Towers  
Printed by Lithprint (Avon) Limited, Bristol

© S D Coates and D G Tucker 1983

---

## Contents

---

Acknowledgements	3
Preface	4
Chapter 1 Introduction	5
Chapter 2 Gazetteer of Mill Sites	9
Chapter 3 The Ironworks	54
Chapter 4 Ruardean Mill — a possibly unique, but puzzling case	64
Index	67

---

## Acknowledgements

---

The research and the collection of material for this book could not have been done without the help of many people. We have had very helpful co-operation from all the owners and occupiers of the various mills and sites investigated, and we are very grateful to them. Then we would like to thank Mr Stephen Clarke, Mr Harry Paar, Mr Inett Homes and Mr Michael Oakley for generously giving us information derived from their own researches. We are very indebted to Miss Grace Towers for so kindly making the sketches for us which have been used in the book. We are glad to acknowledge the helpfulness of the staff of the County Record Office at Hereford, the permission of Mr A.E. Foley to reproduce the plan of Lower Lydbrook, and the generosity of Mr M.P. Watkins in allowing us to reproduce the drawing by J. Powell of the 'Forge at New Wear'.

---

## Preface

---

This book is intended to be a companion volume to our earlier work *Water-mills of the Monnow and Trothy and their tributaries*. It seems likely that a large proportion of readers will already have the previous book, and we have therefore thought it unnecessary to repeat the general discussions on corn-mills and industrial water-powered mills or works which appeared in it. This saving of space has permitted a somewhat fuller physical and historical description in the gazetteer, even in spite of the fact that we have 152 sites as compared with the ninety of the Monnow and Trothy basins. In the present work the forty-three sites which we have had to label P on the map, as being only possible or probable but not certain sites, have been included in proper order in the main gazetteer and not listed separately as in the earlier book.

The system of numbering of sites is worth explaining. Numbers start from the Monmouth end of the river system and increase upstream. When a tributary is reached, numbering proceeds up the tributary before returning to the main stream.

Once again we must emphasise that all the sites are on private property which must not be entered upon without the express permission of the owners or occupiers. However, a very large number of the surviving mill buildings can be viewed externally from public roads or rights of way, and examples are Nos 1, 9, 11, 13, 19, 21, 27, 37, 41, 57, 58, 60, 66, 68, 72, 76, 79, 82, 86, 88, 93, 100, 108, 115, 120, 134, 137, 138 and 149.

Not one of the mills in this area is still in workable condition, although some ten corn-mills have reasonably complete machinery, and many more retain significant parts of theirs, as indicated in our gazetteer.

Stan Coates (Monmouth)  
Gordon Tucker (University of Birmingham)

---

## Chapter One

---

## Introduction

---

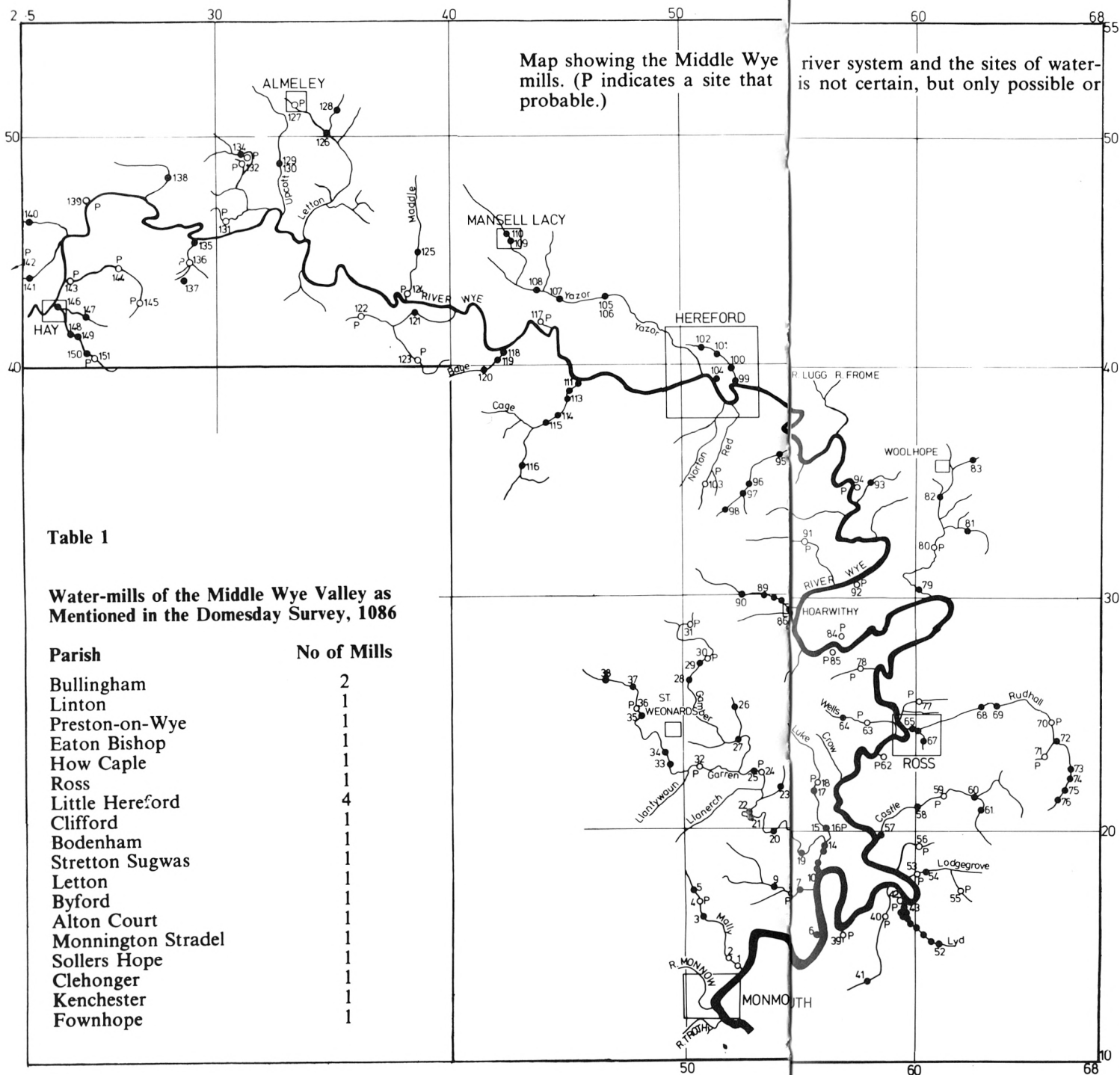
The area served by the mills which formerly worked on the sites described in this book is approximately the same in size as that studied in our previous book *Water-mills of the Monnow and Trothy and their tributaries*, namely about 600sq km or 300sq miles; it is, however, of a much less compact shape. It is effectively the catchment area of the River Wye between Monmouth and Hay-on-Wye, ie the area drained by all the tributaries of the Wye above the confluence of the River Monnow up to the further boundary of Hay, with the important exceptions of the Rivers Lugg and Frome which join one another, and then the Wye, just below Hereford. These two large tributary rivers serve another large area with a large number of mill-sites which will have to be studied separately. Even without these rivers we have 152 sites in our gazetteer.

The map shows that some of the other tributaries which are included are quite long and have their own sub-systems of tributaries. The Garren Brook (often called the River Garren) is the most notable example. Although one or two possible mill-sites appear to be on the Wye itself, all those which have been positively identified — with the exception of No 6, New Weir Forge — are on the tributaries. This is because the Wye itself is a large river, formerly used for navigation, and the construction of a weir to provide a head of water for a mill would have been, firstly, expensive, and secondly, a source of trouble since it would have interfered with navigation. Weirs *were* built on the Wye;<sup>1</sup> if provided with locks they could, if suitably located, actually assist navigation by deepening the water where there were shallows and rapids, and they could be used for trapping salmon and eels. But mills could generally be more satisfactorily worked on the smaller streams.

Many of the mills are or were on the headwaters of streams, where the flow of water is small, and certainly inadequate for daily operation of the mill. Such mills would have a mill-pond to store

# Water-mills of the Middle Wye Valley

## LOCATION MAP



Map showing the Middle Wye river system and the sites of water-mills. (P indicates a site that is not certain, but only possible or probable.)

Table 1

Water-mills of the Middle Wye Valley as Mentioned in the Domesday Survey, 1086

Parish	No of Mills
Bullingham	2
Linton	1
Preston-on-Wye	1
Eaton Bishop	1
How Caple	1
Ross	1
Little Hereford	4
Clifford	1
Bodenham	1
Stretton Sugwas	1
Letton	1
Byford	1
Alton Court	1
Monnington Stradel	1
Sollers Hope	1
Clehonger	1
Kenchester	1
Fownhope	1

Table 2

Water-mills of the Middle Wye Valley in the Fourteenth Century

Place	Approx Grid Ref indicated by Wm Rees	No of Mills	Nearest entry in Gazetteer
Hadnock	SO 531145	1	
Ganrew	SO 527155	1	
Whitchurch	SO 546173	1	8
Whitchurch	SO 539175	1	9
Marstow	SO 560193	1	13
Michaelchurch	SO 522253	1	26
Tretire	SO 518238	1	27?
Lenastone	SO 508273	1	29
Lydbrook	SO 597168	2	44 & 45
Walford	SO 586198	1	57
Weston under Penyard	SO 626217	2	60
Ross	SO 601245	1	66
Rudhall	SO 628255	1	68
Burton	SO 662240	1	72
Netherton	SO 600258	1	77
near Foy	SO 605285	1	
Sellack	SO 565278	1	85
Dinedor	SO 541362	1	95
Aconbury	SO 518337	1	98
Hampton Bishop	SO 551381	1	
Bullingham	SO 510374	1	
Hereford	SO 513395	1	104
Eaton Bishop (tuck mill)	SO 456393	1	111
Eaton Bishop	SO 454392	1	112
Eaton Bishop	SO 446379	1	114
near Sugwas	SO 447409	1	
Preston on Wye	SO 385424	1	121
near Byford	SO 399427	1	
Yarsop	SO 412472	1	
Newchurch	SO 354512	1	128
Bredwardine	SO 328443	1	
Eardisley	SO 312492	1	134
Clifford	SO 290455	1	135
Middlewood	SO 289446	1	136
Clyro	SO 212438	1	141
Clifford	SO 258443	1	144
Clifford	SO 248442	1	
Hay (incl. tuck mill)	SO 230427	3	146

water so that they could be worked effectively, but only on occasional days, perhaps four or five days a month in the winter and fewer in the summer. These were generally farm mills rather than commercial mills, and would grind fodder more frequently than wheat for bread. A detailed example from the Monnow basin was given in the previous book. But even commercial mills producing flour for bread in Ross, Hereford and Hay were on relatively small streams.

Some of the mills were industrial works, concerned with making iron, paper, textiles, etc. This aspect of water-mills was fully discussed in a long chapter in the previous book, and will be treated only briefly here and only in relation to the iron works of the area.

The mill sites discussed here are those which were used in the later eighteenth, the nineteenth and the twentieth centuries. It is known that there were many mills in use in earlier centuries; for the parishes concerned here the Domesday Survey<sup>2</sup> indicated twenty-two water-wheels in 1086, but it is not known exactly where they were; for the fourteenth century, William Rees<sup>3</sup> showed the approximate locations of forty-two water-mills. These early mills are listed in Tables 1 and 2.

Included in the gazetteer are waterwheel pumps. These are not perhaps strictly mills, but they do use the power of the streams by means of waterwheels, and their inclusion therefore seems logical. They were used mainly in the later nineteenth and early twentieth centuries for pumping water from springs up to houses and farms. The stream water was used for power, but it was pure water from a spring which was pumped. On the Monnow and Trothy system we found only one such installation, but in the present area we list no fewer than ten. This must represent a rather exceptional density of such machinery.

## REFERENCES

- 1 H.W. Paar, 'The locks on the River Wye', *J Railway & Canal Historical Soc*, 20, 1974, pp61-7.
- 2 Discussed and recorded in *Victoria County History of Herefordshire*, Vol 1, pp263-345.
- 3 William Rees, *Map of South Wales and the Border in the Fourteenth Century*. (Copy in Monmouth Museum)

---

## Chapter Two

---

# Gazetteer of water mills

---

The numbers used are those of the map, so that the entries in the gazetteer start immediately above Monmouth, exploring each tributary stream before continuing up the main river to the next confluence, and so on; the same system is applied to the tributaries themselves. Where not separately stated, the name of the parish is the same as that of the mill.

References to sources which are frequently quoted are abbreviated thus:

- Ta or Taylor 1754: Isaac Taylor's map of Herefordshire, published 1754, scale 1 inch to mile.
- P or Price 1817: Henry Price's map of Herefordshire, published 1817, scale 1 inch to mile.
- OS c1830: First-edition one-inch Ordnance Survey maps; the sheets actually used were the reprints published by David & Charles of Newton Abbot in the years around 1970, which were based on plates which in many respects had been updated from the original survey. However, it is believed that indications of mills had never been revised and that these reliably indicated the position c1830.
- B or Bryant 1835: A. Bryant's map of Herefordshire, published 1835, scale 1.5 inches to mile.
- TM Tithe map and/or apportionment (collectively known as the Tithe Awards) of the parish and date quoted; scales large but varied.
- OS (and date); Ordnance Survey 6-inch or 25-inch to mile maps of date quoted. (Dates in 1880s are First Edition; dates in 1890s and 1900s are Second Edition.)
- H documents in Herefordshire County Record Office.
- S H.E.S. Simmons Papers in the Science Museum Library, London.

Other sources are given in full.

- 1 **Dixton Mill (Mon)**  
Mally Brook. SO 523140. Mill building of coursed stone and in two main phases is preserved as a barn, with other structural remains adjoining. No indications of machinery. Sherds and wasters suggest site was in use in medieval times and in sixteenth and seventeenth centuries. No history documented. Remains of weir in brook about 200 yards upstream, line of leat traceable as hollow beside hedge for part of distance, then by its embankment. Tail race depression remains.
- 2 **Newton Mill, parish of Dixton (Mon)**  
Mally Brook. SO 519144. No standing remains. Excavated by Stephen Clarke 1959-61, exposing outline of mill building about 30ft x 15ft and parts of millstones in quartz conglomerate, about 4ft diameter. Probably abandoned in seventeenth century. Wide leat, several hundreds of yards long, very clear under ancient hedge.
- 3 **Buckholt Mill, parish of Dixton (Mon)**  
Mally Brook. SO 507161. Just on Welsh side of brook. Walls partly standing; mill about 20ft x 20ft with exterior wheel-pit on west side, now filled in and closed on south by stone wall. More recent extension to mill on east. Wheel was probably overshot. Believed very old mill site. On Bryant 1835, TM (Welsh Newton) 1846; millers: Geo Tippins 1851-8, J. Breakwell 1868-71, T. Waite 1884. Leat and terminal pond recognisable although Water Board's filter station stands in southern end of pond (nearest the mill). (B, TM, S)
- 4 **Buckholt Old Mill or Boundary Mill.** On boundary of Dixton (Mon) and Welsh Newton (Herefs)  
Mally Brook. SO 506168. No remains and exact site uncertain. Shown as Buckholt Old Mill, with mill symbol, on Bryant 1835, at this place.
- 5 **Welsh Newton Mill (Herefs)**  
Mally Brook. SO 503173. No standing remains: site excavated some years ago by Stephen Clarke; exposed wall-footings could have been the mill. On the same (east) side of brook is a ledge where the leat may have run, leading to a terminal pond, putative banks for which are still visible. This would have given a head of as much as 15ft. Not on maps.
- 6 **New Weir Forge, parish of Whitchurch (Herefs)**  
R. Wye. SO 559156. Undoubted site but only fragmentary remains. Mill and Forge shown by Taylor 1754, TM (Whitchurch) 1847 shows 'Site of Ironworks. Owners: Commissioners of Woods and Forests'. For further details see Chapter 3.
- 7 **Whitchurch Mill (Herefs)**  
On small tributary to R Wye. SO 549175. Site obliterated by dual-carriageway road. Shown on Bryant 1835 by mill symbol, not on OS c1830, nor TM (Whitchurch 1847), although adjacent land is 'Mill Pond and Land'. Shown as 'Corn Mill' on OS 1905. Millers: Frederick Mayo 1856-70; Edmund Mayo 1879-1909. Old negative by Michael Oakley shows a stone-built three-storey structure. (B, TM, S, OS 1905)

- 8 **Mill in Whitchurch (Herefs)**  
On small tributary to R Wye. SO 546172. No remains. Shown on Taylor 1754. Not shown on any later maps. No other documentation.
- 9 **Lewstone Mill, parish of Whitchurch (Herefs)**  
On small tributary to R Wye. SO 538174. Mill building exists, now incorporated into adjoining house. The overshot wheel *in situ*, 14ft x 3ft, with cast-iron centre and rims, sheet iron buckets and wood arms, is reputed to have been brought from another mill; Michael Oakley's photographs of 1954 show a very slimly-built wheel, generally answering the above description, but probably pitch-back. No internal machinery remains. Taylor 1754 shows **Luston Mill**, marked on Price 1817, shown on OS c1830; Bryant 1835 shows **Lewston Mill**; TM vague; **Lewstone Mill (Corn)** on OS 1904. Millers: Jenkins family 1807-1917. Line of leat detectable for about 50 yards above the stone-lined pond, now dry. (Ta, P, OS c1830, B, TM, S, OS 1904)
- 10 **Old Forge, Whitchurch: parish of Goodrich (Herefs)**  
On Garren Brook at confluence with R Wye. SO 559184. No trace of forge buildings but there is some cinder and slag in the angle between the Garren and the Wye. There are also two stone buildings in this angle; the larger one is reputedly an old warehouse serving the quay on the bank of the Wye; traces of the quay remain. Taylor 1754 shows **Old Forge**, similarly Price 1817 and OS c1830. Bryant 1835 shows **Old Forge** and **Old Forge Wharf**. TM (Goodrich) 1838 shows **Old Forge** displaced 200 yards NW. For further details of history see Chapter 3.

Lewstone Mill (No 9) at the left of the mill house, with which it is now incorporated.



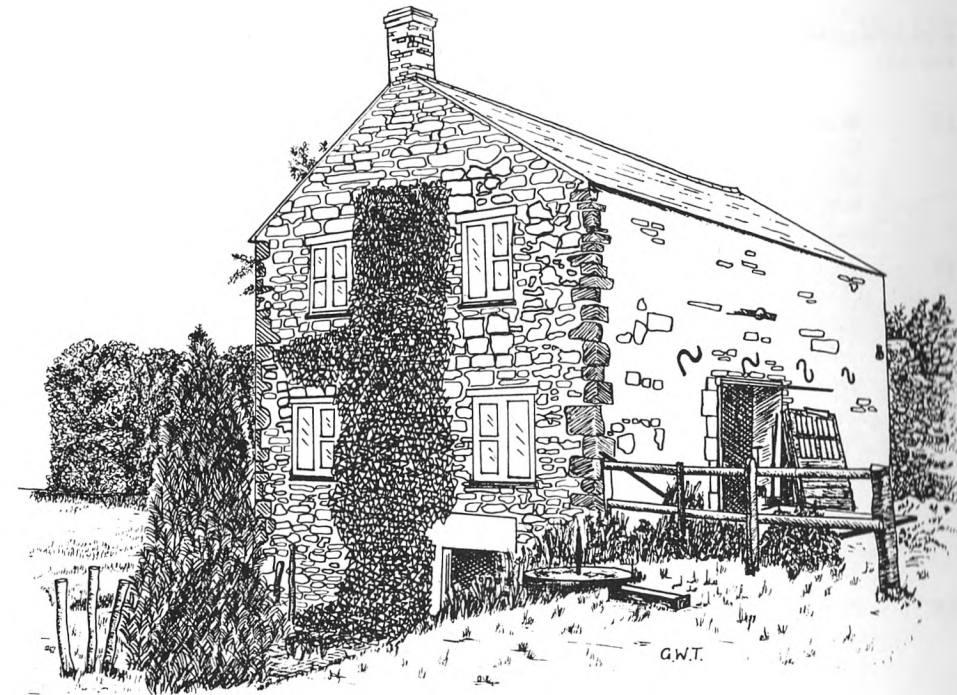


The waterwheel presently at Lewstone Mill (No. 9), evidently not the proper wheel for the mill.

- 11 **Old Forge Corn Mill, Whitchurch:** parish of Goodrich (Herefs)  
On Garren Brook. SO 559185. Building still stands, three-storey stone-built. Only remaining machinery is overshot wheel approximately 10ft diameter x 7ft 6in wide, axle, and pit-wheel; all probably late nineteenth century, all iron except for arms of wheel. Building probably much older. Opposite is an old bakehouse with built-out oven. Owner said it was known that grain was last ground in 1913, but water-powered wood-working machinery was used here until 1944. Taylor 1754 shows *New Mill* here (cf 'Old Mill' 1/2 mile upstream), Bryant 1835 shows mill within 200 yards of here, TM (Goodrich) 1838 shows mill, owner and occupier Thos. Powell. Leat remains, about 100yd from stone-built stepped dam. (Ta, B, TM)
- 12 **Waterwheel Pump** near Old Forge Corn Mill, Whitchurch, parish of Goodrich (Herefs)  
On Garren Brook. SO 558186. Small brick building just to west of brook above dam for Old Forge Mill. Slated roof, derelict, but complete. Overshot wheel 6ft x 2ft 8in, sheet iron. Double ram pump by E. & R. Roberts Ltd. Pumps water from spring c200 yards away to small reservoir c1/4 miles away, from which fed by gravity to various farms on estate. Understood to have been installed c1913.
- 13 **Old Mill, parish of Goodrich (Herefs)**  
On Garren Brook. SO 560193. Three-storey mill building remains (on east bank of brook), but mill-house demolished c1950. Former

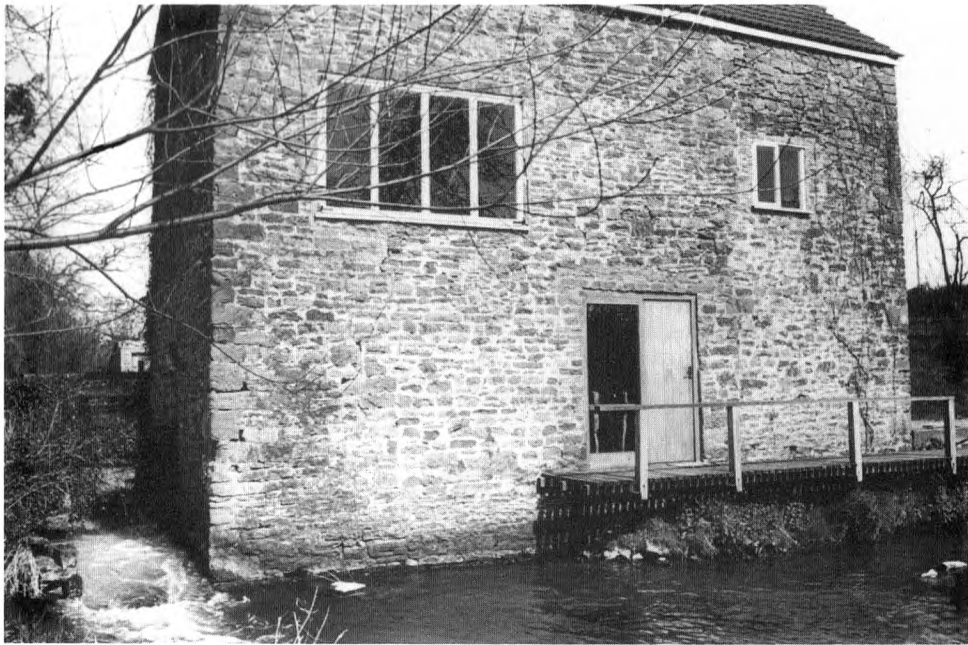
wheel-pit has slots for control sluice. Wheel was undershot. Pit-wheel remains *in situ*, 8ft diam, cast iron, in two parts. Other gears all iron, dismantled but preserved:- Great spur 6ft 3in over rim, wallower 3ft 7in diam with octagonal hole 19in across, crown wheel 3ft 10in diam with hexagonal hole 13in across. A piece of the vertical wooden shaft remains, 11in diam; waterwheel axle *in situ*, wooden, about 19in diam with flats. The gears are later than the shafts and appear to have come from another mill, being fitted to the shafts with wedges. Three pairs of French burrs. Taylor shows mill here 1754; Price 1817, Bryant 1835, TM (Goodrich) 1838 all show **Old Mill**; shown on all OS maps. Millers: Wm Howells 1838-56, Wheeler and Parry 1870, J.G. Lloyd 1879, Thos Edwards 1885-91. Leat about 100yd long from concrete dam now carries main flow of Garren, leaving old river course as overflow channel. (Ta, P, B, TM, OS various, S)

- 14 **Waterwheel Pump** near Old Mill, parish of Goodrich (Herefs)  
On Garren Brook. SO 561194. At western end of Old Mill dam. Building demolished, waterwheel preserved at Old Mill (overshot, 3ft 6in diam x 18 1/2 in wide, of sheet iron with rod spokes, sprocket on axle for chain drive to pump), small plunger pump still *in situ*. Supplied water to New Court Farm nearby.



Old Forge Corn Mill, Whitchurch (No 11). Sketch by Grace Towers.



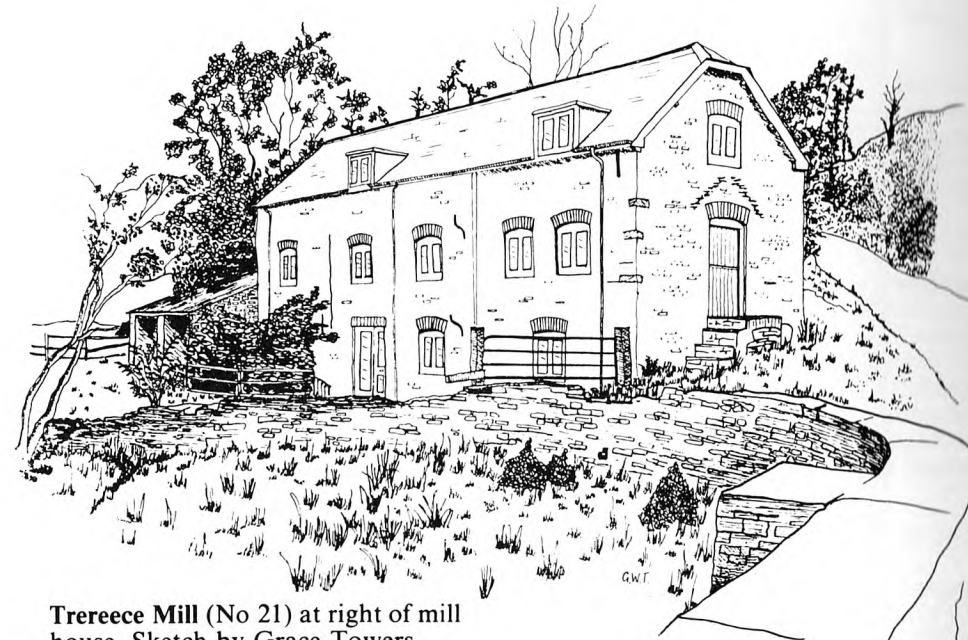


**Old Mill**, parish of Goodrich (No 13). The undershot waterwheel was in the channel on the left.

- 15 **Waterwheel Pump**, Brelston Green, parish of Marston (Herefs)  
On Luke Brook. SO 561202. Open-top concrete chamber in dam. High-breast wheel 4ft x 1ft 9in, with cast iron hub, steel spokes, rim and buckets, chain-drive to plunger pump. All derelict. (Derelict pump-house nearby with fittings for internal-combustion engine).
- 16 Possible mill site at Brelston Green, parish of Marston (Herefs)  
On Luke Brook. SO 561202 (approximately same site as waterwheel pump, No 15). TM (Marston) 1841 shows 'Lower Mill Ground' and 'Upper Mill Ground' here. No other evidence.
- 17 **Waterwheel Pump** near Glewstone, parish of Marston (Herefs)  
On Luke Brook. SO 557218. Brick building with corrugated-iron roof, 10ft x 6ft, built into bank about 10yd from eastern side of brook. Waterwheel overshot, about 8ft x 9in, tubular spokes screwed into bosses on cast-iron hub, sheet iron rim and buckets. Horizontal pump driven by connecting rod from crank on waterwheel axle — maker's plate: **Blake Bros., Makers, Ross on Wye**. All derelict. Outlet: 4in cast-iron pipe controlled by wheel-valve.
- 18 Probable Paper Mill near point where parishes of Hentland, Goodrich, Bridstow and Peterstow (Herefs) used to meet, near Glewstone.  
On Luke Brook. SO 558221 is position of **Paper Mill Bridge** on TM (Hentland) 1841. This stretch of the Luke Brook is called 'Paper Mill Brook' on TM (Goodrich) 1838. So there must once have been a

paper mill near here; there are no indications of it now. It is not certain, of course, that the mill was water-powered, but it must have used a water supply. Much confusion is caused by the fact that the parish boundaries have been changed since the time of the Tithe Maps; the portions of Hentland, Bridstow and Peterstow were all detached portions which have now been removed. Site probably now in Marston parish.

- 19 **Tuck Mill**, Marston (Herefs)  
On Garren Brook. SO 552191. Present house called Tuck Mill is converted from old mill house and the mill. Head race with sluices and over-flow weir now feeds ornamental pond. Conglomerate millstone in front pavement. No mill machinery remains. Bryant 1835 shows **Tuck Mill** with mill symbol, TM (Marston) 1841 and also TM (Llangarron) 1840 show the mill. OS 1904 also marks **Tuck Mill**. Miller 1840-1, John Preece. Michael Oakley's photograph of 1954 shows wheel in action, apparently low-breast, perhaps about 15ft x 2ft on side of a wing of building extending at right angles behind main buildings; he says wheel had gone by 1957. (B, TM, OS)
- 20 **Treveren Mill**, parish of Llangarron (Herefs)  
On Garren Brook. SO 538199. No standing remains of buildings, only footings; remains of timber waterwheel axle and cast-iron spokes. Shown as mill on Taylor 1754, Price 1817, OS c1830, Bryant 1835, TM (Llangarron) 1840; **Treveren Mill (Corn)** on OS 1904. Millers: John Taylor 1840, W. Price or Preece 1856-67, Geo Joseph 1885-91. Water supply almost directly from weir in brook, head sufficient only for low-breast wheel. (Ta, P, B, TM, OS various, S)



**Trereece Mill** (No 21) at right of mill house. Sketch by Grace Towers.

**Treerece Mill**, parish of Llangarron (Herefs)

On Garren Brook. SO 529206. Building stands, attached to residence. Interior overshot waterwheel remains *in situ*, 9ft diam x 6ft 10in wide, with wooden axle and spokes, iron hub and rim, sheet iron buckets, headbox still in position. First map indication on Bryant 1835 (spelling TreRhys), TM (Llangarron) 1840. Described as 'newly erected' in 1842, so presumably built just before 1835, or rebuilt c1840. Millers: James Morgan 1840, E. Maxfield 1856, Chas Notley 1867-91. Weir remains in brook, leat about 600yd long on inside of horseshoe bend in brook. Underground tail race (about 25yd). (B, TM, later OS, S, *Midland Counties Herald*, 19 May, 1842)

The weir (with sluice) which headed the water into the leat for **Treerece Mill** (No 21).

**Waterwheel Pump**, Treerece, parish of Llangarron (Herefs)

On Garren Brook. SO 528207. Brick, semi-subterranean building remains, close to weir for Treerece Mill, on opposite side of brook to mill leat. Pump on girders above wheel, which is about 8ft x 2ft 6in. Installed 1903 to supply water to village of Llangarron until about 1960, according to research of Mr Inett Homes.

**Waterwheel Pump**, Bernithan Court Ponds, parish of Llangarron (Herefs)

On tributary to Garren Brook. SO 542218. Remains derelict below dam of upper pond. Iron wheel about 7ft x 1ft, wooden frame. Supplied water to Bernithan Court. Later replaced by hydraulic ram nearby which also remains derelict.

## Possible site of old mill at Langstone, parish of Llangarron (Herefs)

On Garren Brook. SO 533225. Apparent site, with much stone walling on both sides of brook, 25yd downstream of end of tail race from Langstone Mill. Indications of old watercourses. No documentary evidence apart from suitable watercourse shown on TM (Llangarron) 1840.

**Langstone Mill**, parish of Llangarron (Herefs)

On Garren Brook. SO 531225. Mill building stands. Wallower, pit-wheel and great spur wheel remain together with two French burr bedstones. Waterwheel was 14ft x 4ft, low-breast, removed c1940 to improve drainage. (Mill worked until c1939). Large fireplace, chimney and probable bakery oven in wall opposite wheel. Marked on Taylor 1754, Price 1817, OS c1830, Bryant 1835, TM (Llangarron) 1840, **Langstone Mill (Corn)** on OS 1904. Millers: Edward Maxfield 1840, Thos Prosser 1867, Chas Knottley 1870, T. Griffiths 1879, Richard Lewis 1885. Short head race (c40yd), long tail race (c200yd). (Ta, P, OS various, B, TM, S)

**Michaelchurch Mill**, parish of Tretire with Michaelchurch (Herefs)

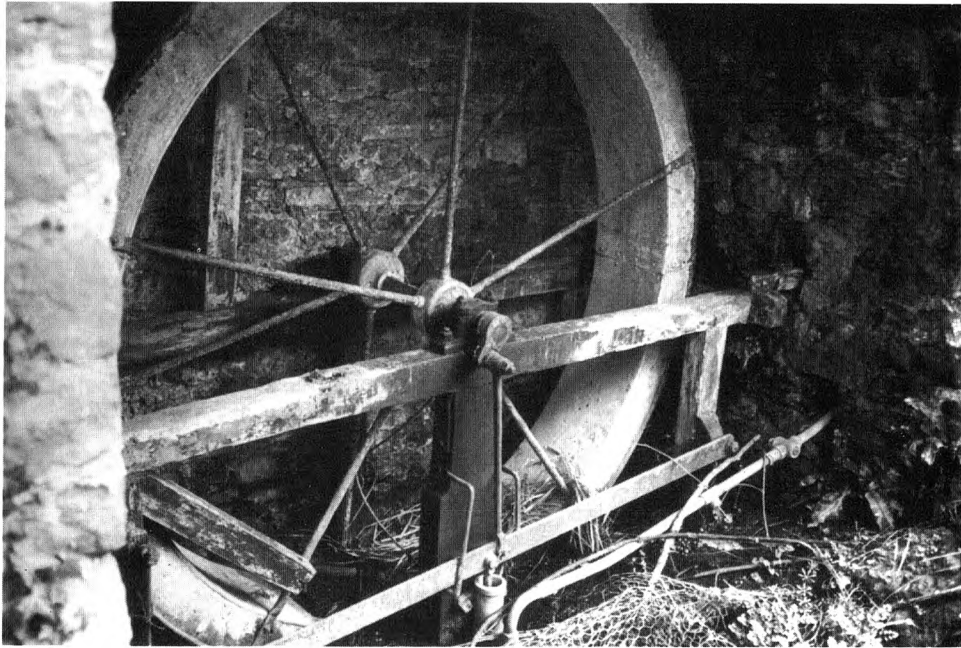
On tributary to The Gamber Brook. SO 522253. Demolished; ceased work c1928. Was a stone-built farm mill with overshot wheel; ground corn, cut chaff, and other farm tasks. Tail water used for irrigation. Water supply inadequate for continuous working. OS 1904 shows **Corn Mill** here. No other documentary evidence known.

**Tretire Mill**, parish of Tretire with Michaelchurch (Herefs)

On The Gamber Brook. SO 523238. Building stands, now a dwelling. Overshot waterwheel remains, 8ft diam x 6ft 6in wide, wooden axle, iron hub and rim, wooden arms, sheet-iron buckets. Four 4ft French burr millstones, and iron and composite gears, in garden. Marked on Taylor 1754, OS c1830, Bryant 1835, TM (Tretire with Michaelchurch) 1839; **Tretire Mill (Corn)** on OS 1904. Millers: Thos Wheeler 1831-39, R. Wheeler 1856, C. Elliotts 1863, Alfred Thos Keddle 1870, Richard Roberts 1879-1913, Henry Roberts 1917-22, Smith family 1926-.

**Lower Mill**, on boundary between parishes of Pencoyd and Llanwarne (Herefs)

On The Gamber Brook. SO 502265. No trace of mill remains. Marked as **Mountains Mill** on Taylor 1754, **Low'r Mill** on Price 1817, **Old Mill** on Bryant 1835. Not on OS c1830 nor shown on TM of



**Waterwheel Pump** at Bernithan Court (No 23), showing the wheel, crank and pump.

either parish, although 'Lower Mill Meadow' shown in Pencoyd and 'Mill Meadow' in Llanwarne. **Lower Mill** on OS 1905. The probability is, in spite of the 1905 reference, that the mill ceased to work before 1835 and disappeared soon after that date.

- 29 **Lenaston Mill**, parish of Pencoyd (Herefs)  
On The Gamber Brook. SO 507272. Mill building remains, with ground floor and wheel-pit filled in, used as a store and henhouse. Three-storeys. Only remaining machinery is two French burr bedstones and sack-hoist pulley *in situ*. Shown as **Lenaston Mill** on Taylor 1754, Price 1817, Bryant 1835; **Mill** on OS c1830; not explicitly on TM (Pencoyd) 1839 but 'Mill Meadow' shown; **Corn Mill (Disused)** on OS 1905. Leat over 1 mile long, detectable, but largely ploughed over, terminal pond about 50yd from mill with culverted head-race, very short tail-race. Wheel was probably undershot, about 4ft wide.

- 30 Possible mill-site near Lenaston, parish of Pencoyd (Herefs)  
On The Gamber Brook. SO 511273. The leat to Lenaston Mill passes here and two old footpaths and the road meet here also. Physically an unlikely site but quite possible. Shown by Taylor 1754 (mill symbol) in addition to Lenaston Mill, but on no later maps.

- 31 Probable site of **Deacon's Mill**, near Llanwarne; on boundary of parishes of Llanwarne and Much Birch (Herefs), and probably in former  
On The Gamber Brook. SO 503287. There is a building here, but does not appear ever to have been a water-mill. **Deacon's Mill** on estate map of 1768; **Deacon's Mill** on TM (Much Birch) 1842, and on OS 1904. No other evidence, so can be regarded only as a probable site. (TM, H)
- 32 Possible site of **Tuck Mill** near Llangunnoch Bridge, parish of Llangarron (Herefs)  
On Garren Brook. SO 504227 approx. No field evidence. Marked as **Tuck Mill** (but without mill symbol) on Bryant 1835; also **Tuck Mill** on OS 1905.
- 33 **Lower Mill**, near Velindra, parish of St Weonard (Herefs)  
On Garren Brook. SO 494228. Site exists as excavation in left bank of stream immediately below the dam, the lower part of which still remains, stone-built about 2ft wide and 25ft long. Sluice-gap for head-race exists, indicating water level above dam formerly about 8ft above present level, giving good storage capacity. Possible wheel-pit detectable; wheel probably overshot. A line visible across field to east of stream indicates probable roadway to mill. Marked as **Lower Mill** by Taylor 1754, not on later maps. Mill site probably disused for c200 years.
- 34 **Old Furnace**, St Weonards (Herefs)  
On Garren Brook. SO 492234. Group of farm buildings on site preclude identification of site, except for clearly-visible line of leat. Marked as **Old Furnes** on Taylor 1754, **Old Furnace** (without mill symbol) on Bryant 1835, **Old Furnace** on OS from c1830, **Furnace** on Tithe Appointments (St Weonard's). Reputedly there was a paper mill here at some time. The site remains without satisfactory explanation, but there is furnace slag to be found in the area.
- 35 **Rhydicar Mill**, parish of St Weonard (Herefs)  
On Garren Brook. SO 482249. Some footings of mill remain, wheel-pit detectable, with head race from end of stone dam embanking the mill pond, about 1/2 acre, now dry. Line of leat clear for about 400yd, also tail race about 50yd. Owner thought mill had been derelict since before 1920 and that its timber had been used in St Weonards Church for rehangng the bells. Marked as **Rydyker Mill** on Taylor 1754, **Rhydicar Mill & Farm** on Bryant 1835, **Rhydicar Mill (Corn)** on OS 1904. Millers: E. Caldicott 1856, J. Lloyd 1863, Jos Saunders 1867, T. Morgan 1879, T. James 1885, A. Brewer 1891-95, John and Herbert Went 1900-5, John Went 1909. (Ta, B, OS 1904 and later, S)
- 36 Possible site of **Lady's Mill**, parish of St Weonard (Herefs)  
On Garren Brook. SO 479252. No signs of this mill could be found. Marked as **Ladys Mill** on Taylor 1754. No other evidence known.
- 37 **Orcop Mill**, Herefs  
On Garren Brook. SO 479261. Ruinous mill building remains, with derelict machinery. Conventional layout for two pairs of stones. Two pairs of French burr millstones among debris. Wheel-pit about 5ft wide, probably overshot wheel about 12ft diam. Marked as **Orcop**

Mill on Taylor 1754 and Bryant 1835, Mill on OS c1830; Lower Mill on Price 1817 and TM (Orcop) 1843; Lower Mill (Disused) on OS 1904 and later. Millers: Edward Caldicott 1843, Chas Barrel 1867, Henry Goulding 1870, T. White 1885. Leat about 500yd long, barely detectable; weir demolished. (Ta, P, OS from c1830, B, TM, S)

- 38 Mill near Orcop, Herefs  
On Garren Brook. SO 467264. Leat just detectable, remembered before filling in by owner. No other traces remain. Marked by mill symbol on Taylor 1754, Mill on Price 1817, other records researched in 1967 by Mrs J. Coleman of Orcop. (Ta, P, H)
- 39 Possible site of mill in parish of English Bicknor (Glos)  
On very small stream running into R Wye here. SO 569157. TM (English Bicknor) undated, shows Orchard & Mill here. Could very well be merely a horse-powered cyder mill.
- 40 Possible site of mill in parish of English Bicknor (Glos)  
On small stream running into R Wye SO 587164. No visible sign of a former mill. Documentary evidence: Millway marked on OS c1830; Millways Grove and Millway Head on Plan of Manor of Bicknor belonging to Viscount Gage, 1792, Gloucester Record Office, PH 23; similar on TM (English Bicknor) undated.
- 41 Joyford Mill, just in parish of English Bicknor (Glos)  
On small stream running into R Wye. SO 579137. Mill building still stands as three-storey wing attached to large mill-house, still used. Mill shows only one storey at front; lowest floor now filled in. No machinery for perhaps 50 years. Wheel-pit filled in, but probably about 3ft wide, with breast or undershot wheel. Not marked on OS c1830, but shown on TM (English Bicknor) undated. Millers: W. Copner 1856-70, Justice Copner 1879-89.
- 42 Possible site of mill in parish of English Bicknor (Glos)  
Near bank of R Wye. SO 596171. No visible sign owing to obliteration of site by road-works. Shown on TM (English Bicknor) (nd) as Mill House & Yard.

**The Lydbrook Valley**, parishes of Newland, Ruardean and English Bicknor (all Glos)

In this small valley there are probably at least ten sites where there have been water-powered industrial and/or milling activities. Here they are listed in order up the stream; the corn-mills will then be discussed in more detail as gazetteer entries, while the industrial sites will be discussed in Chapter 3. Owing to the density of sites in the Lower Valley, eight figure grid references have been used for the appropriate entries to ensure identification of the sites. The stream is the Lyd Brook, known in its upper reaches as How Brook. The parish boundaries in this valley were extremely complex, there being several detached small enclaves; moreover, there have been changes of boundary, and indeed the creation of the new parishes of East and West Dean followed by the creation of Lydbrook as a separate ecclesiastical parish, then civil parish, during the last two centuries. Hence, no individual parish attributions are given here.

- 43 Lower or Lydbrook Forge. SO 59541681



Part of Tretire Mill (No 27), showing the broad waterwheel and modern wooden panelling enclosing the upper part of its millment, with the arch of the tail race showing clearly below.

- 44 Corn mill. SO 59531675  
 45 Little's Mill. SO 59581668  
 46 Iron/Tinplate Works. SO 59611652  
 47 Middle Forge/Tinplate Works. SO 597(5)162(0) (located to nearest 50m)  
 48 Wireworks. SO 598161  
 49 Ironworks. SO 600160  
 50 Upper Forge. SO 602156  
 51 Corn mill. SO 607152 (Forge in earlier centuries)  
 52 Waterloo Corn Mill. SO 609152 (Furnace in earlier centuries)

In addition to corn milling and the various branches of the iron industry, there had, in the sixteenth century at least, been some textile industry there, for a fulling mill was mentioned in a deed of 1583 (see J. Tann, 'Gloucestershire Woollen Mills', Newton Abbot 1967, p244).

- 44 **Corn Mill, Lydbrook**  
 On Lyd Brook. SO 59531675. No recognisable site, but distinctly marked as a mill separate from the nearby mill, later Little's Mill, on map of 1842. C. Hart (*Industrial History of Dean*, maps at end) shows yet a third mill in this small area, but it is possible he was misled by wrongly placed labelling ('Lydbrook Mill') on 2nd edition 25in OS map.
- 45 **Little's Mill, Lydbrook**  
 On the Lyd Brook. SO 59581668. Site cleared; pond remains identifiable but entirely overgrown with trees. Site confirmed by local resident of 72 years standing. From c1880 had steam as well as water power. (Photo in C. Hart, *Industrial History of Dean*, Plate 48, shows the chimney associated with the steam engine of the mill). Advert in *The Miller*, 7 August, 1893, probably referred to this mill: 'To be let or sold — All that old established steam and water power flour mill . . . now worked on the combined principle, the greater part of the plant having been put in recently'. In *The Miller*, 2 October, 1911, E. Little and Sons, Lydbrook, advertised for a miller, 'accustomed to Rolls and Stones'. The mill was in the Little family continuously from at least 1851 to 1914; Edwin Little at least 1856-94. TM (English Bicknor) (nd) shows **Grist Mill** here, with Thos Probert as occupier. (TM, Hart, *The Miller*, Kelly's Directory)
- 51 **Corn Mill, Upper Lydbrook**  
 On (Great) How Brook. SO 607152. Site altered beyond recognition except for overgrown upper part of pond. Local resident born in 1908 and living in Lydbrook all his life, cannot remember a mill here. (Site may be located by the visitor by the telephone exchange on part of it). **Corn Mill** on OS 1879, and Alfred Cooper ('water miller') was probably the miller here in 1885 and 1894, although he was gone by 1902. Simmons gives name **Newland Bridge Mill** to Cooper's establishment, but it is not known what his source was. (OS, S, Kelly's Directory)

- 52 **Waterloo Mill, Upper Lydbrook**  
 On (Great) How Brook. SO 610152. Mill demolished reputedly about 1960. Photographs of this mill taken in early twentieth century (C. Hart, *Industrial History of Dean*) show large overshot waterwheel and siphon pipe feed to it. Local belief is that the water came from a spring in an old mine. Thomas Burdock was the miller at least from 1851 to 1906, and from the 1880s he was 'miller (water and steam)' with his sole address at Waterloo Mill, thus inferring that Waterloo Mill had a steam engine as had Little's Mill lower in the valley. However, no suitable chimney shows in photographs. Mill shown on OS 1879. (OS, S, Kelly's Directory)
- 53 **Bishopswood Furnace**, probably just in parish of Ruardean (Glos) but adjacent to boundary of parish of Walford (Herefs)  
 On Lodgegrove Brook. SO 602183. No superficial remains. **Bishops Wd. Furnace** on Price 1817, **The Furnace Pond** shown on TM (Walford) 1844, pond shown but without reference to furnace on TM (Ruardean) 1840. This pond now gone and site wooded. There is a possibility that the furnace was on hillside to south and actually fed with water-power from the pond higher up valley (see next entry), since traces of a leat can be detected. See Chapter 3.
- 54 **Bishopswood Corn Mill**, on boundary of parishes of Ruardean (Glos) and Walford (Herefs)  
 On Lodgegrove Brook. SO 603183. Considerable stone-work remains against dam of pond (which is large and in good condition). The site is very puzzling. Pond shown as **The Furnace Pond** (not to be confused with that at SO 602183) on TM (Walford) 1844. Shown without reference to furnace on TM (Ruardean) 1840. A smaller storage pond at SO 607184 remains. **Old Corn Mill** marked on OS 1886.
- 55 **Ruardean Mill**, parish of Ruardean (Glos)  
 On headwaters of Lodgegrove Brook. SO 619176 or 619178. Mill long gone and site now not certain. Known to exist in fourteenth century and in 1795. See Chapter 4.
- 56 **'The Mills**, Bishopswood, parish of Walford (Herefs)  
 On a small brook tributary to R Wye. SO 601194. No likely site of water mill, but a silted-up pond above this location is reputed to have been a fish-pond. TM (Walford) 1844 shows **The Mills** here. A sale notice dated 1898 for this property does not mention a mill.
- 57 **Walford Mill**, parish of Walford (Herefs)  
 On Castle Brook. SO 586198. Old corn-mill building now work-shop for a saw-mill. Present owner acquired mill in 1939 and ground barley up to 1946. No mill machinery now remains, but owner says waterwheel was iron, 12ft x 4ft, overshot, driving three pairs of stones; 6in square iron axle; all made at Bishopswood (qv). There was an alternative drive to six wood-turning lathes. Shown as **Walford Mill** on Taylor 1754, **Mill** on Price 1817, **Mill** on OS c1830, **Corn Mill** on Bryant 1835, shown on TM (Walford) 1844 with mill pond but not identified as mill, **Corn & Saw Mill** on OS 1904. Millers: H. Phelps 1856, 63; Robert Smith 1867. (Ta, P, B, TM, OS various, S)

**Coughton Mill**, parish of Walford (Herefs)

On Castle Brook, SO 602212. Mill building still in good order, but without machinery, which was taken out c1914. Thought to have had four pairs of stones, with two waterwheels, probably both overshot, one internal, one external. Not shown on Taylor 1754 or OS c1830, but **Mill** on Price 1817, Bryant 1835, **Coughton Mill (Disused)** on OS 1904. TM (Walford) 1844 shows **Coughton Mill** with a long pond which has now disappeared. Millers: Wm Howell 1835-44, J. Mathews 1856, W.H. Bussell 1863, H.T. Bussell 1867 (miller at Ross and Coughton, with James Hope manager at Coughton) Wm Smith 1885, Clement Hall 1895. (P, B, TM, OS 1904, S)

59

Possible **Tuck Mill** in parish of Walford (Herefs)

On Castle Brook. SO 612216 approx. No visible evidence now. TM (Walford) 1844 shows **Tuck Mill Meadow** here, so there must have once been a tuck mill, but not necessarily water-powered.

60

**Bill Mill**, parish of Weston under Penyard (Herefs)

On Castle Brook. SO 626217. There is now a massive conglomeration of old buildings around an old water mill. There could easily have been two mills here, one a paper mill and one a corn mill. Present use of some of the buildings is as a mineral-water factory, but the old corn mill machinery remains largely intact, with overshot wheel 14ft x 5ft with iron rim, hub and axle but wooden arms; pit-wheel about 8ft diam, great spur, etc. Millstones gone, but there were three pairs. There is a small engine (stated by proprietor to be a steam engine, but looking like an oil engine, with no boiler) in an adjacent building. Good mill pond.

Paper mill evidence: **Paper Mill** on Taylor 1754, **Paper Mill and Bill Mill** here on Price 1817. Sun Fire Insurance Policy No 447189 of 16 August, 1781 covers property of Richard Parker of Weston under Penyard, Paper Maker, as follows: Dwelling house, Workhouse, Ragloft, £130; Paper Mill £50; Utensils and stock £50; 2 Drying houses £50; Utensils and stock therein £50; drying houses tiled and thatched; other buildings brick, stone and tiled. Joseph Lloyd, Paper Maker, 1816.

**Bill Mill** on Taylor 1754 (shown about 200yd away); Price 1817; Bryant 1835; TM (Weston under Penyard) 1838. Millers: Thos Bright 1838-51, Alfred John Wintle and Sons 1870-1917.

Balance of evidence favours two mills rather than conversion from paper to corn mill. (Ta, P, B, TM, S)

61

**Hopes Ash Farm Mill**, parish of Hope Mansell (Herefs)

On Castle Brook. SO 628210. No remains. Mill was working in 1932, believed to be three-storey building with undershot wheel; demolished in 1950s. An old photograph shows a chimney stack which stood until recently. **Mill** on Price 1817, **Mill** on OS c1830, **Hopes Ash Farm & Mill** on Bryant 1835, **Corn Mill** on OS 1905. TM (Hope Mansell) 1840 shows **Millpond** but does not mention mill. (P, B, TM, OS various)

62

**Lower Cleeve Mill**, parish of Ross

On small tributary to R Wye. SO 587233. No remains apart from two partly stone-lined ponds. Shown on Price 1817. Not shown on TM (Ross) 1840. Site must be regarded as probable rather than certain.



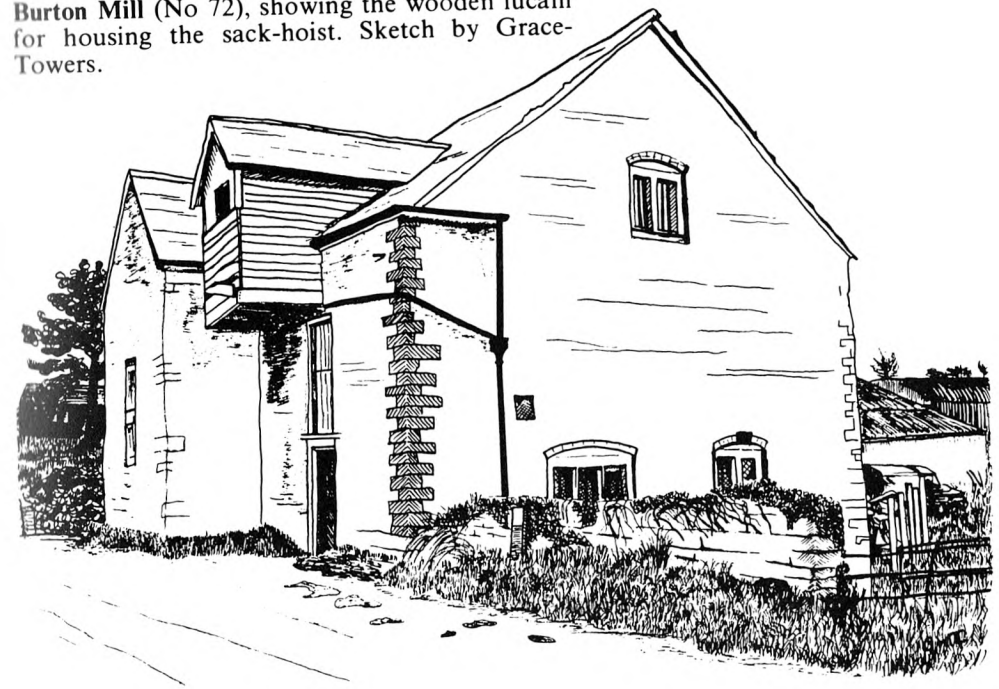
Part of the complex of buildings at **Bill Mill**, near Weston under Penyard (No 60), showing the mill pond in the foreground. The waterwheel is in the stone building on the left.

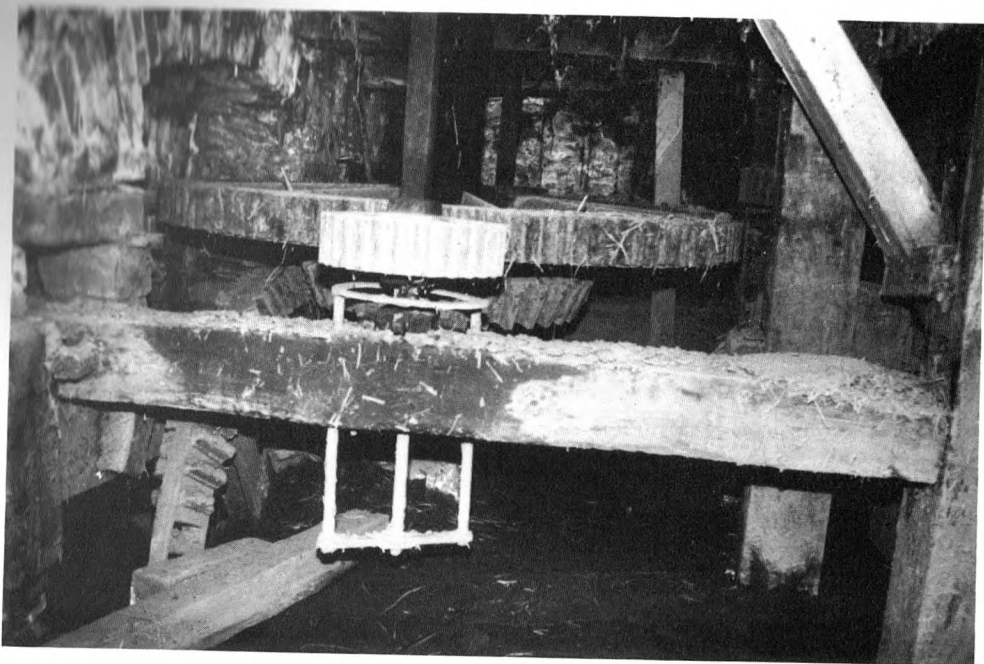
- 63 Possible site of mill in parish of Bridstow (Herefs)  
On Wells Brook. SO 580248. No sign of mill site now. **Pool Mill** shown on Taylor 1754, **Poolmill Br.** on OS c1830, **Pool Mill** (but without mill symbol) on Bryant 1835. Name **Poolmill** persists.
- 64 **Waterwheel Pump** near Peterstow, on boundary of parishes of Peterstow and Sellack  
On Wells Brook. SO 568251. Site recently cleared. Mrs Lewis of Poolmill remembers being taken by her father some 60 years ago to oil the waterwheel which pumped water to Moraston House and Farm.
- 65 **One Mill, Ross**  
On Rudhall Brook. SO 598245. No remains. Shown by this name on Bryant 1835 and TM (Ross) 1840. Millers: John and James Morgan 1835, James Morgan 1842 ('One Mill, bottom of Edde Cross Street'), Philip Morgan 1851 ('One Mill, Rope Walk'), Job Prosser 1867. (B, TM, S)
- 66 **Brookend Mill, Ross** (also known as **Town Mill**)  
On Rudhall Brook. SO 601244. Very large mill still in use as such, although not now water-powered. Shown but not named on Taylor 1754, and Bryant 1835. Millers: Henry Hart 1842-51 ('Brookend Mill'), John Jordan 1863-7 ('Ross Steam Flour Mills, Brookend'). 'Ross Town Mills' to be sold 1815. 'Town Mill' described in 1893 as having an old portion with four pairs of stones, water-driven; behind this a recently built modern roller mill of three-storeys, built in brick, with four-sack plant, steam engine, Robinson system; Millers: Bussell and Pike. (Ta, B, S, *Worcester J.* 19 January 1815, *The Miller* 6 November 1893)  
Inconsistencies in above data leave room for the possibility that there were two different mills even before the construction of the 'modern roller mill'.
- 67 **Chase Mill, Ross**  
On tributary to Rudhall Brook. SO 604241. Some ruined remains of building on probable site, with dam about 100yd higher upstream and indications of beginning of leat. Mill pond remains as ornamental feature. **Chace Mill** on Taylor 1754, **Chase Mill** on Price 1817 and TM (Ross) 1840. (Ta, P, TM)
- 68 **Rudhall Mill, parish of Weston under Penyard** (Herefs), on boundary with Ross and Upton Bishop parishes  
On Rudhall Brook. SO 628254. Four-storey building still stands, used as farm store, ground floor, wheel-pit and head race now filled in. No equipment left except some grain bins and the sack-hoist shafts. Rubbing marks on wall indicate internal overshot wheel about 10ft x 6ft. Line of leat and brook much altered during motorway construction. **Rudhall Mill** on Bryant 1835, **Mill** on TM (Weston under Penyard) 1838, **Corn Mill** on OS 1904. (B, TM, OS 1904)
- 69 **Foxhall Mill, parish of Weston under Penyard** (Herefs)  
On Rudhall Brook. SO 634256. Remains as ruin, with wheel-pit indicating overshot or high breast wheel about 12ft x 4ft. No machinery remaining. Shown as mill on Taylor 1754 and OS c1830;

**Lower Foxhall Farm & Mill** (with mill symbol) on Bryant 1835, **Foxhall Mill** on TM (Weston under Penyard) 1838, **Foxhall Mill (Corn)** on OS 1904. Bryant shows a mile-long leat, and about half of this is still detectable, although filled in. Tail race 75yd long, also filled in. (Ta, B, TM, OS various)

- 70 Possible site of mill in parish of Linton (Herefs)  
On Rudhall Brook. SO 658249. No remains. Mill marked on Taylor 1754 but on no later maps. TM (Linton) 1839 shows **Mill Meadow** here.
- 71 Possible site of mill at Eccleswall Court, parish of Linton (Herefs)  
On tributary to Rudhall Brook. SO 655234. No remains of mill. **Mill** marked on Taylor 1754, but on no subsequent map.
- 72 **Burton Mill, near Burton Court, parish of Linton** (Herefs)  
On Rudhall Brook. SO 661241. Stands complete but with lowest floor filled with mud up to depth of several feet. Overshot wheel 10ft x 5ft, all iron. Timber headbox fed from culvert under road, probable large pond now filled in. Three pairs of French burr stones, one pair at least by Corcoran, London, numbered 1644. Mill has lucam. Shown on Taylor 1754, Price 1817 (**Burton Mill**), OS c1830, Bryant 1835, TM (Linton) 1839. Millers: Thos Winnall Junr 1839, C. Edwards 1856, David Yates 1870, James Forty 1885-95, George Forty 1900-5. (Ta, P, B, TM, OS various, S)

**Burton Mill** (No 72), showing the wooden lucam for housing the sack-hoist. Sketch by Grace-Towers.





Inside **Burton Mill** (No 72), showing the pit-wheel (the vertical gear-wheel which is actually on the waterwheel shaft), the wallower (the horizontal bevel gear which engages with it), and the great spur gear above the wallower, engaging with the small gear (a 'stone nut') on a shaft driving a millstone on the floor above. Mud brought in by a flood has covered the floor of the mill to a level above the waterwheel shaft.

- 73 **Lower Mill**, near Aston Crews, parish of Aston Ingham (Herefs)  
On Rudhall Brook. SO 667228. Building exists, in use as store. Timber headbox, wooden axle and iron bosses of internal overshot wheel about 10ft x 4ft remain. Debris contains two pairs French burr stones, stone nuts and tentering gear. Worked by present owner until 1960 for feedstuffs. Shown as mill on Taylor 1754, OS c1830, Bryant 1835 (**Lower Mill**), TM (Aston Ingham) 1839 (**Lower Mill**), modern OS maps (**Aston Mill** or **Mills**). Leat 75yd long, stone-lined terminal pond now largely filled in, tail race obliterated. (Ta, B, TM, OS various)
- 74 **Upper Mill**, in parish of Aston Ingham (Herefs)  
On Rudhall Brook. SO 668225. Ruins of three-storey mill building exist. Thought not to have worked for nearly a century. Waterwheel was probably overshot, about 16ft x 3ft. Shown as mill on Price 1817 OS c1830, Bryant 1835 (**Upper Mill**), TM (Aston Ingham) 1839 (**Upper Mill**), OS 1904. Stone-lined leat about 100yd long traceable; tail race culverted for 10yd, then open channel to brook. (P, B, TM, OS various)

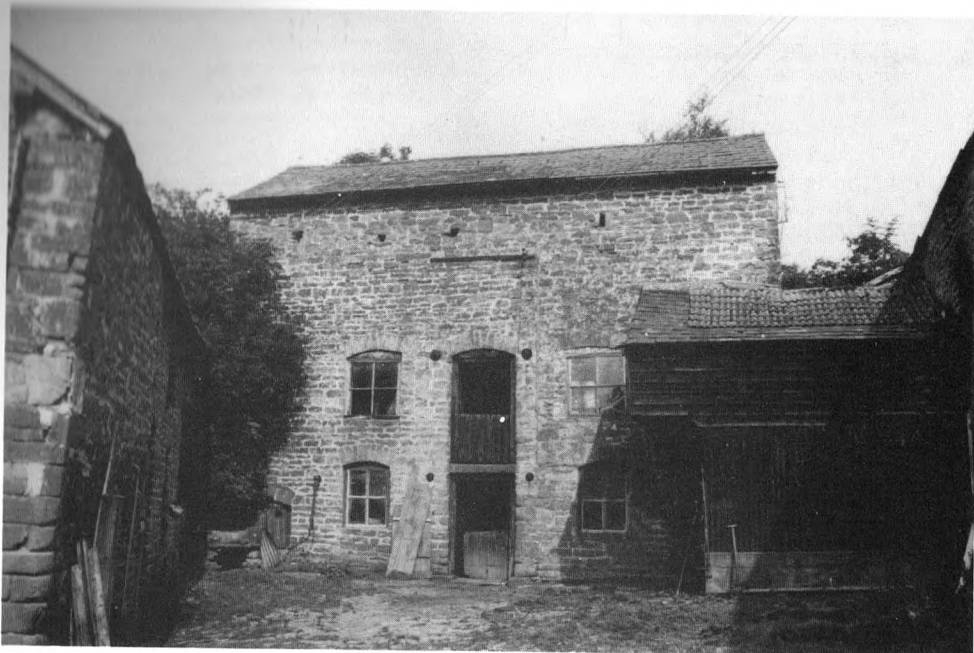
- 75 **Warren Mill**, in parish of Aston Ingham (Herefs)  
On Rudhall Brook. SO 665219. Mill building has been dwelling house for about a century (deed of 1891 in possession of owner refers to 'building form'ly used as a water corn mill'). Two conglomerate millstones, 4ft diam, in garden. Line of leat in garden detectable. Shown on Taylor 1754, Bryant (**Warren Mill**) 1835, TM (Aston Ingham) 1839 (**Warrens Mill** with pond). (Ta, B, TM, document in private hands)
- 76 **Mill** in parish of Lea (Herefs)  
On Rudhall Brook. SO 662217. Leat, head race and tail race still carry water and thus make the site almost certain. It is just possible that the building on the site, which is a large 'lean-to' attached to dwelling house, was a mill. Shown as mill on Price 1817, OS c1830, Bryant 1835. Plan of 1877 shows **Old Mill** here. Miller: Thos Gammon 1867 (shown as 'miller, Lea Mill'). (P, OS c1830, B, S, Plan of Wilderness estate 1877, Gloucester RO, D177114)
- 77 Possible mill site at Netherton, on boundary of parishes of Ross and Brampton Abbots (Herefs)  
On small tributary to R Wye. SO 601257. No remains of mill, land much altered; remains of dam and embankments of pond. Shown on Taylor 1754, but on no other maps examined.
- 78 Probable mill site on boundary of parishes of Bridstow and Sellack (Herefs); also waterwheel pump  
On small tributary to R Wye. SO 578273. No remains of mill or pond, but local resident remembers remains of a waterwheel some 50 years ago. **Burnt Mill Pool** on Taylor 1754, **Bean Mill Pool Orchard** on TM (Sellack) 1839. A brick chamber 8ft x 4ft on bank of brook probably houses a waterwheel pump; parts of waterwheel and pump remain.
- 79 **How Caple Mill**, parish of How Caple (Herefs)  
On Tatnell or Totnor Brook. SO 601303. Mill building now a dwelling house, having probably been converted into two cottages in 1904 (date plaque over door) and only more recently into single dwelling. Shown as **How Caple Mill** on Taylor 1754 and TM (How Caple) 1839, **Mill** on Price 1817, **Rectory Mill** on OS c1830, **Corn Mill** on Bryant 1835. Millers: Mrs M. Prosser 1856, Mrs M. Read 1863, Passey & Hooper 1867, Charles Hooper 1870-9, Mrs Mary Hooper 1885-91. Long leat still detectable, pond and tail race filled in. (Ta, P, OS c1830, B, TM, S)
- 80 Possible site of mill in parish of Sollars Hope (Herefs)  
On Tatnell or Totnor Brook. SO 608323. No remains, but site practicable. Shown as mill on Taylor 1754, **Old Mill House** with no mill symbol on Bryant 1835, **Mill Meadow/Orchard** on TM (Sollars Hope) 1839. Mill must have ceased around end of eighteenth century. (Ta, B, TM)
- 81 **Grey Mill** in parish of Sollars Hope (Herefs)  
On tributary of Tatnell or Totnor Brook. SO 622329. Site almost certainly identified by dam and pond and tail race. Shown as mill on Price 1817, **Grey Mill** with mill symbol on Bryant 1835, **Mill Pleck/Orchard** on TM (Sollars Hope) 1839. (P, B, TM)



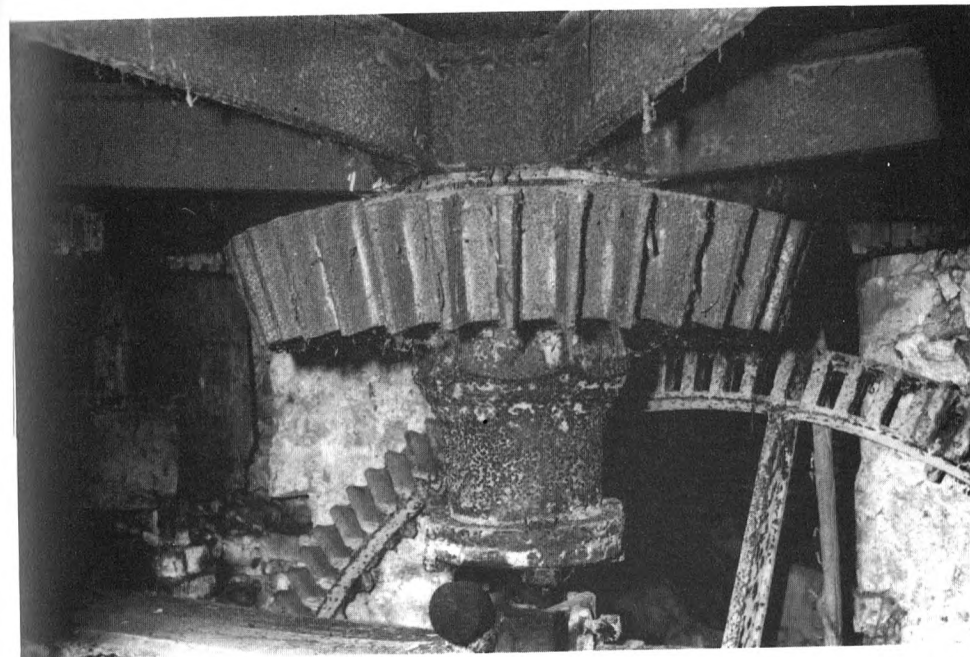
- 82 **Alford's Mill**, parish of Woolhope (Herefs)  
On Tatnell or Totnor Brook. SO 609345. Mill building and adjoining house exist, with derelict overshot wheel 15ft x 3ft, all iron; formerly had hexagonal wooden axle. Hursting for two pairs of stones; no other machinery. Mill reputedly closed down in 1927 and machinery scrapped in 1968. Shown as **Marcle Mill** on Taylor 1754, mill on Price 1817, and TM (Woolhope) 1845, **Halfords Mill** with mill symbol on Bryant 1835 (this name also 1867), **Alford's Mill (Corn)** on OS 1904. Millers: John Reed 1845, Joseph Griffiths 1867, Reuben Passey 1870, J. Price 1895-1922. Leat half-mile long with small terminal pond (now dry), tail race 75yd long. (Ta, P, B, TM, OS various, S)
- 83 **Winslow Mill**, parish of Woolhope (Herefs)  
On tributary to Tatnell or Totnor Brook. SO 625361. No identifiable remains of mill, but cottage on site called Winslow Mill Cottage. **Winslow Mill** marked on OS c1830 and **Winston Mill** on TM (Woolhope) 1845; **Mill (Disused)** on modern OS maps, eg 1:25K map of 1960. The TM showed two adjoining buildings; the present half-timbered cottage stands where one of these was shown; the other site is empty. The stream is now only a trickle because the water from its source (300yd up the hill) is pumped electrically to the farm above, but last century it might well have been adequate to drive a small mill a few days a month.
- 84 Possible mill site in parish of Kings Caple (Herefs)  
On postulated tributary of R Wye. SO 567285. No sign of stream or mill now. **Millbrook** marked, on small brook, by Bryant 1835; **Mill Ditch House** etc shown on TM (Kings Caple) 1839. No record of any mill as such. It seems possible that at some time water was diverted here to provide for a mill.
- 85 Possible mill site at Sellack (Herefs)  
On presumed tributary to R Wye. SO 564277. Possible site 100yd west of St Tysiliog's Church, with dressed building stone. Pond and watercourses almost dry, straight ditch from site to R Wye probable tail race. Shown by mill symbol in this position on W. Ree's *Map of South Wales and the Border in the fourteenth century*.
- 86 **Hoarwithy Mill**, parish of Hentland (Herefs)  
On Wriggle Brook. SO 545293. Still stands with almost complete machinery on north-east side; ceased working c1930. Has provision for two waterwheels, one on each side of the building, with each driving two pairs of stones, but no machinery remains on south-west side. NE wheel remains, derelict, 12ft x 4ft 1½in, overshot; iron boss, rim and buckets; wooden axle, arms and soleplates. Conventional layout of gearing driving two pairs of French burr stones, tubular cast-iron vertical shaft 10in diam. Building still used for milling with electric motor on trolley belt-driving disc grinder. Shown on Taylor 1754, Bryant 1835, TM (Hentland) 1841, OS 1904 and later. Millers: John Wheeler 1841-70, Jonathan Wheeler 1879, Misses J. & E. Wheeler 1885, James Preece 1891-1900. Leat 500yd to stone-lined pond, tail race 100yd to brook. (Ta, B, OS various, S)



Alford's Mill, Woolhope (No 82).



Hoarwithy Mill, (No 86).



Inside Hoarwithy Mill (No 86), showing the pit-wheel (apparently fallen out of mesh and with many of its wooden teeth missing), the wallower and the bottom of the iron vertical shaft.

- 87 **Tresech Mill** or Paper Mill, near Hoarwithy, parish of Hentland (Herefs)  
On Wriggle Brook. SO 542298. Pair of modern cottages on mill site, weir and overflow channel remain. Mr M. Oakley says 'it was a picturesque timbered building with an exterior wheel to the left of the building as you faced it'. Shown on Taylor 1754, Price 1817, OS c1830. **Paper Mill** (but without mill symbol) on Bryant 1835, **Paper Mill** on TM (Hentland) 1841. **Tresech Mill (Bone)** on OS 1904, **Mill (Disused)** on OS 1956. Was advertised as 'Tresseck Bone Crushing Mill (formerly paper mill)' in 1844. Presumably became grinding mill around 1840 and remained so. (Ta, P, B, TM, OS various, *Midland Counties Herald* 17 October 1844, S)
- 88 **Middle Mill**, near Hoarwithy, parish of Hentland (Herefs)  
On Wriggle Brook. SO 538299. Mill building, with adjoining cottage, exists in good condition, but devoid of machinery; three storeys, external wheel, probably high breast. Hurstings remain for two pairs of stones. Shown on Taylor 1754 and OS c1830, **Lower Mill** on Bryant 1835, **Grist Mill** on TM (Hentland) 1841, **Middle Mill (Corn)** on OS 1904. Stone-lined small terminal pond filled by dam across brook. Larger storage pond on opposite side of dam, and in parish of Little Dewchurch. (Ta, B, TM, OS various)

- 89 **Prothither Mill**, in parish of Little Dewchurch (Herefs)  
On Wriggle Brook. SO 535300. No remains. Shown on Taylor 1754 and OS c1830, **Perthither Farm & Mill** on Bryant 1835, **Prothither Mill** on TM (Little Dewchurch) 1839 and OS 1904, **Pethedor Mill** in 1851, **Prothethers Mill** in 1853. Millers: Elizabeth Seal 1839, W.R. Bennett c1850, B. James 1856, Thos Seal 1870-85, John Digwood 1891, Thos Lewis 1900. (Ta, B, TM, OS various, S, *London Gazette*, 13 June 1851 and 29 July 1853)
- 90 **New Mill**, in parish of Little Birch (Herefs)  
On Wriggle Brook. SO 525301. No identifiable building remains, but leat detectable, apparently leading to a mound some 25yd across which shows remnants of stone walls and may therefore be site of mill. **New Mill** on Taylor 1754 and on OS c1830, **New Mills** on Price 1817, Bryant 1835 (without mill symbol), **New Mills Farm** on TM (Little Birch) 1841 and on modern OS. (Ta, P, B, TM, OS various)
- 91 **Trill Mill**, Bolstone (Herefs) (probable site)  
On small stream joining R Wye at Carey. SO 552326. No remains of mill detected, but probable leat can be followed. Only reference found is TM (Bolstone) 1839.



Inside **Hoarwithy Mill** (No 86), showing the upper end of the iron vertical shaft, with the crown wheel engaging with the drive to the sack-hoist and other machinery.

- 92 **Carey Mill**, in parish of Fownhope (Herefs)  
On R Wye. SO 574307. No identifiable remains. **Carey Mill** on Bryant 1835 (but without mill symbol), and on TM (Kings Cagle) 1839 although outside Kings Cagle Parish.
- 93 **Nupend Mill**, in parish of Fownhope (Herefs)  
On tributary of R Wye (name not known). SO 580351. Brick mill building now dwelling house; probably had internal wheel about 6ft wide. No machinery remains. Remnants of pond and dam. Shown as mill on Price 1817, OS c1830, and TM (Fownhope) 1843; **Rudor Mill** (with mill symbol) on Bryant 1835, **Nupend Mill (Corn)** on OS 1904. Millers: T. Hockley 1856, Thos Hiles Smith 1867, Wm Slade 1885. (P, B, TM, OS various, S)
- 94 Possible site of mill in parish of Fownhope (Herefs)  
On R Wye. SO 574349, on east bank of river. No ground evidence, but island in river 100yd upstream provides possible site of weir and level bank thence to farm could have carried leat. **Mill Farm & Ford**, without mill symbol, on Bryant 1835; TM (Fownhope) 1843 shows **Mill Orchard**; still **Mill Farm**.
- 95 **Dinedor Mill**, parish of Dinedor (Herefs), but on boundary with Holme Lacy  
On Tars Brook. SO 542362. Mill building (three storeys) converted into dwelling house; no machinery, but holes for shafts, etc, remain. Probably overshot wheel; high-level pond behind house now filled in. Square brick chimney stands, probably from former bakehouse. **Dinedor Mill** on Taylor 1754, shown as mill on Price 1817 and OS c1830, **Dinedor Mill** on Bryant 1835 and TM (Dinedor) 1840. **Dinedor Mill (Corn)** on OS 1904. Millers: John Dandy 1840, G. Hiles 1856, Wm Wheatstone 1863-79, Wm Beavan 1885, Wm Eaton 1891-5, Thos Lewis 1900-5. (Ta, P, B, TM, OS various, S)
- 96 **Mill** in parish of Dinedor (Herefs)  
On Tars Brook. SO 528348. Site indicated by building stone, leat and probable pond. Indistinct mill symbol here on Bryant 1835, shown on TM (Dinedor) 1840.
- 97 **Tars Mill**, near junction of parishes of Dinedor, Aconbury and Holme Lacy (Herefs)  
On Tars Brook. SO 527345. No buildings remain, but line of leat clear for about 100yd. **Tarrs Mill** on Taylor 1754 and Price 1817, **Tars Mill** on Bryant 1835 and TM (Dinedor) 1840, **Tar's Mill** on OS c1830 and 1904. (Ta, P, B, TM, OS various)
- 98 **Farm Mill**, Aconbury, (Herefs)  
On Tars Brook. SO 517337. No remains, but farm employees knew of mill closed down about 1950 and demolished 1968. Mill used turbine in later years fed by 9in iron pipe fed from pond about 200yd away; ground corn and drove farm machinery, and had auxiliary steam engine.
- 99 **Eign Mill**, Hereford, formerly in parish of Hampton Bishop, township of Tupsley  
On Eign Brook. SO 522394. Mill demolished but site recognisable by debris and indications of leat and pond. Road still named **Eign Mill**

Road. Shown as mill by Taylor 1754, **Eign Mill** on Price 1817, Bryant 1835 and TM (Hampton Bishop) 1839; **Disused** on OS 1886. In 1800 had one waterwheel; rebuilt by 1814 with two wheels, six pairs French stones, dressing machine and bolting mill. Millers: Jas Isaac 1839, Wm Jas Isaac 1867, both also at Scutt Mill (see below). (Ta, P, B, TM, Os 1886, Royal Exchange Fire Insurance Policy No 174684, *Shrewsbury Chronicle*, 17 June 1814, S)

- 100 **Scutt Mill**, Hereford (as Eign Mill above)  
On Eign Brook. SO 520399. Timber-framed red-brick mill building of three storeys still stands, attached to a mill house of later date. No machinery, no sign of wheel-pit or watercourses. Still discernable on west side is lettering:  
SAUNDERS & CO. SCUTT MILLS  
MILLERS, BAKERS,  
CORN MERCHANTS.  
**Scutt Mill** on Taylor 1754, **Scut Mill** on Price 1817, OS c1830, Bryant 1835, and TM (Hampton Bishop) 1839.

- 101 **Monkmoor Mill**, Hereford, parish of St Peter  
On Tan Brook. SO 515404. No remains. Mill shown by Taylor 1754, OS c1830, Bryant 1835; **Monkmoor Mill** on TM (St Peter) 1843 with narrow upper pond feeding wider (c30yd) lower pool and leat. Woollen mill in 1838 with 4hp wheel and employing twelve people. **Monkmoor Mills (Wool & Leather)** and mill pond on OS 1929. (Ta, B, TM, OS various, S)

**Middle Mill, Hoarwithy** (No 88) with its mill house on the left. The terminal pond was behind the stone wall on the right of the mill, and the overshot wheel was on the adjacent wall of the mill.



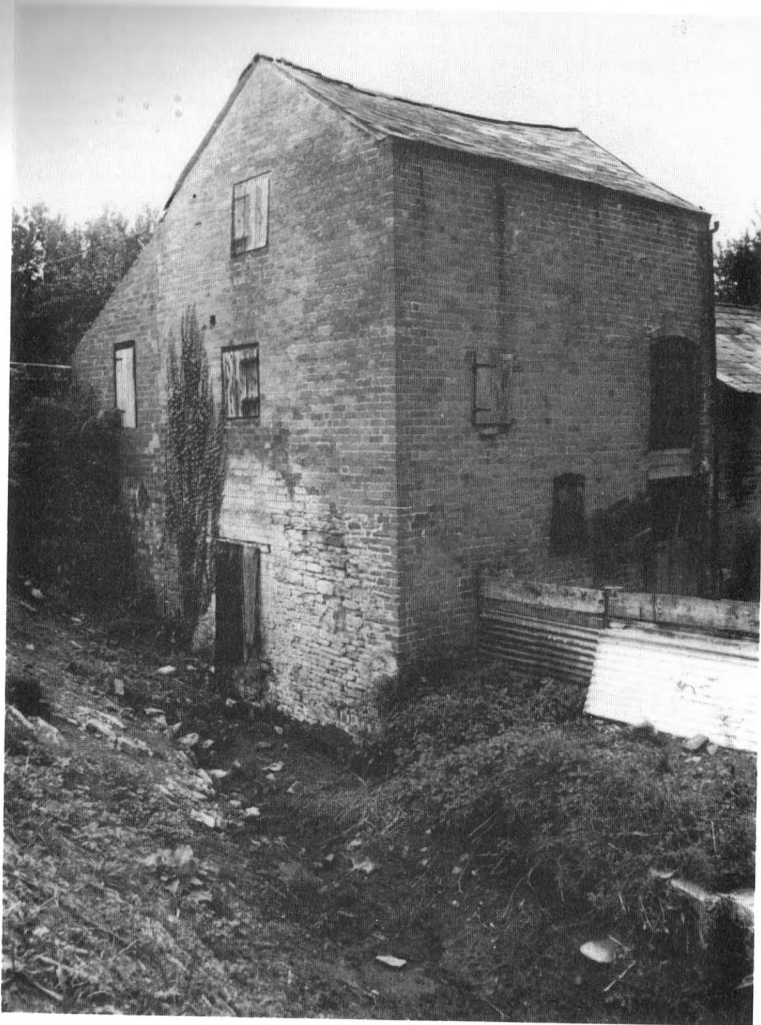
- 102 **Widemarsh Mill**, Hereford, in parish of Holmer but on boundary of All Saints  
On Widemarsh Brook. SO 07408. No remains. Shown as mill on Taylor 1754 and Bryant 1835 (with pond); **Widemarsh Mill** on TM (All Saints) 1841 and TM (Holmer) 1847. Millers: Jas Croft 1835-42, Thos Powell 1847, Richard Grisman 1851. (Ta, B, TM, S)
- 103 Possible site of mill at Twyford, in parish of Callow (Herefs)  
On Red Brook. SO 510349. No sign of mill on ground, but site physically possible. **Mill House** on TM (Callow) 1840.
- 104 **Castle Mill**, Hereford, parish of St Owen  
No watercourse known but appears to have been associated with the Castle Moat; close to R Wye. SO 513395. No sign of mill, but Mill Street remains. **Castle Mill** on Taylor 1754 (on enlarged plan of City) and TM (St Owen) 1843; mill shown by Bryant 1835. Other references 1794 and 1831. Former existence certain. Millers: John Howells 1843, James Howell 1851. (Ta, B, TM, S)
- 105 **Stretton Court Farm Mill**, parish of Stretton Sugwas (Herefs)  
On Yazor Brook. SO 466430. Brick-built mill (24ft x 18ft) exists as extension of remarkable range of timber-framed farm buildings. Machinery complete, but now without water supply. Overshot waterwheel, all iron, 12ft diam x 8ft wide, in under floor chamber. Pit-wheel with wooden teeth drove iron wallower. Wooden vertical octagonal shaft about 14in between opposite faces. Great spur wheel with eight iron arms and of diam about 6ft, with wooden teeth, is about 8ft above wallower, and drove two nuts; one for the single pair of French burr stones (by Huxhams & Brown of Exeter) on floor above, and one for the 2½in iron shaft to a wooden-toothed bevel wheel which provided the drive to farm machinery in adjoining building. Mr Michael Oakley says there was also a mill here with a wooden undershot wheel. Leat, but not mill, shown on TM (Stretton Sugwas) 1840, 'Mill pond' shown on OS 1931.
- 106 **Waterwheel Pump** at Stretton Court Farm, parish of Stretton Sugwas (Herefs)  
On Yazor Brook. SO 465430. No remains. Former existence vouched for by owner of farm.
- 107 **Credenhill Mill**, Herefs  
On Yazor Brook. SO 449430. No remains. **Credenhill Mill** on Price 1817, shown as mill on OS c1830 and Bryant 1835; **Corn Mill** on TM (Credenhill) 1843 and OS 1931.
- 108 **Kenchester Mill**, near boundary of parish of Kenchester but just in parish of Brinsop (Herefs)  
On Yazor Brook. SO 438434. Mill building remains, red-brick above stone lower parts, corrugated iron roof. Derelict machinery includes internal overshot wheel about 12ft x 3ft 6in, iron arms and shroud, wooden buckets and axle. Remains of timber headbox. Had two pairs of stones; fallen French burr rests on waterwheel. Leat destroyed but pond detectable. **Kenchester Mill** on Taylor 1754, shown as mill on Price 1817, OS c1830, Bryant 1835, TM (Brinsop) 1843. Millers: Edward Lewis 1843, T. Vaughan 1863. (Ta, P, OS c1830, B, TM, S)

- 109 **Mansell Mill**, parish of Mansell Lacy (Herefs)  
On Yazor Brook. SO 426454. No identifiable building remains, but pond, short leat and tail race detectable. Shown as mill on Price 1817 and Bryant 1835, **Mansell Mill** on TM (Mansell Lacy) 1843, **Corn Mill** on OS 1900. (P, B, TM, OS 1900).
- 110 **Upper Mill**, parish of Mansell Lacy (Herefs)  
On Yazor Brook. SO 424457. No remains, except mill pond now a fish pond. Shown as mill on Bryant 1835, **Upper Mill** on TM (Mansell Lacy) 1843 — in common ownership and tenancy with Mansell Mill. Simmons identifies this as **Mansell Lacy Mill** and gives millers: J. Whittingslow 1856 (as on TM), Mrs E. Whittingslow 1863, Francis Hines 1870, Wm Jones 1879-1905. (B, TM, S)
- 110A **Saw Mill**, Yarsop  
On Yazor Brook. SO 409474. Buildings of several periods remain in poor condition. Lower stone-built structure appears to be very old; it is surmounted by more recent (late nineteenth century?) brick and timber-framed weather-boarded single-storey buildings at road level. Water turbine remains at bottom of large pit, about 12ft deep, under the building, fed by iron pipe about 18in diam bringing water from pond about 60yd x 20yd on other side of road; total head about 30ft. A smaller pit, about 3ft wide, parallel to turbine pit, may have housed an earlier waterwheel. Mill was sawmill for the Foxley Estate, but no documentary evidence so far found except **Sawmill** on OS 1905.
- 111 **Tuck Mill**, in parish of Clehonger (Herefs) but on boundary of Eaton Bishop  
On Cage Brook. SO 456393. Bungalow stands on what appear to be the stone footings of the mill, with some of its stone walling incorporated into the later brick walls. Leat distinct for about 600yd. Tail race lined with masonry. **Lower Mill** on Taylor 1754, shown as mill on Price 1817, **Tuck Mill** on Bryant 1835, and TM (Clehonger) 1839; **Tuck Mill** on OS c1830, **Tuck Mill (Corn)** on OS c1880, **Mill (Dis)** on OS 1957. (Ta, P, B, TM, OS various)
- 112 **Ruckhall Mill**, in parish of Eaton Bishop (Herefs) but on boundary of Clehonger  
On Cage Brook. SO 452389. Mill now gone and brick dwelling house stands on site. Mr Michael Oakley says mill destroyed c1920; believed to have had two external overshot wheels. **Eaton Mill** on Taylor 1754, shown as mill on Price 1817 on OS c1830, **Ruckwall Mill** on Bryant 1835 and TM (Eaton Bishop) 1840. Ruckhall is name of area on modern OS. Simmons gives insurance reference 1794. Millers: Thos Wheeler 1840-70, Chas Beavan 1879-95. (Ta, P, OS c1830, B, TM, S)
- 113 **Abbey Mill**, in parish of Clehonger (Herefs)  
On small tributary brook to east of Cage Brook. SO 452385. Mill now gone. Had small pond and probably overshot wheel. Shown as mill on Price 1817 and on OS c1830, **Abbey Mill** on Bryant 1835, pond and mill shown on TM (Clehonger) 1839, **Abbey Mill (Corn)** on OS 1886, **Abbey Mill (Disused)** on OS 1903. (P, B, TM, OS various)



**New Mill, Eaton Bishop** (No 115). The waterwheel is just inside the left-hand wall, below road level.

- 114 **Cagebrook Mill**, in parish of Clehonger (Herefs), but adjacent to boundary of Eaton Bishop  
On Cage Brook. SO 446378. Mill now converted to residence, extending original mill house. Portion of overshot wheel, about 10ft x 5ft 6in, with one axle support and part of header, still remains in muddy basement; no other machinery survives. Building of brick but a stone-built wing at lower level on north may have been an earlier mill building. **Cagebrook Mill** on Taylor 1754, mill shown on Price 1817, OS c1830, Bryant 1835 and TM (Clehonger) 1839; **Cagebrook Mill (Corn)** on OS 1886 and 1903. Millers: Samuel Seal 1839, Richard Wheeler 1856, Wm Jones 1863, James Jones 1868, Chas Beavan 1870, 76, James Jones 1879, Geo Jones 1885, Henry Rowse 1888-9, Geo R. Millichamp 1895, James Moore 1902-14, Herbert Moore 1926-9, Herbert J. Cottrell 1934-7. Mill pond about 100yd long now ornamental feature of garden. (Ta, P, B, TM, OS various, S)
- 115 **New Mill**, parish of Eaton Bishop (Herefs), adjacent to boundaries of Clehonger and Kingstone  
On Cage Brook. SO 440376. Weatherboarded mill with some brick and stone, and half-timbered mill house, all recently restored, with slate roof. All machinery remains, two pairs French burr stones, external overshot wheel 10ft x 4ft 6in, all iron. **New Mill** on Taylor 1754, OS c1830, Bryant, 1835; **New Mills** on Price 1817 and TM (Eaton Bishop) 1840; **New Mill (Corn)** on OS 1886 and 1903. Millers: Lewis family probably continuously from before 1840 to 1929. (Ta, P, B, TM, OS various, S; for more complete history, see *Industrial Past*, Spring 1982, p21)



Arkstone Mill (No 116) showing parts of an older stone wall in the lower part.

- 116 **Arkstone Mill**, parish of Kingstone (Herefs)  
 On tributary of Cage Brook. SO 430357. Three-storey building intact, brick upper part on stone base, so probably rebuilt or enlarged from earlier mill. Two pairs of French burr stones *in situ*, also a wooden pulley for sack-hoist; all other machinery removed; portions of 1 1/2 in octagonal upright shaft lying outside. Owner said all gears were of iron except for wooden great spur wheel. Head was about 14ft, with pond and 300yd leat; sluice structure remains.

Believed not worked since World War I. Shown as mill on Taylor 1754, OS c1830, Bryant 1835, TM (Kingstone) 1842, **Arkstone Corn Mill** on OS 1904. (Ta, B, TM, OS various)

- 117 Possible mill at Weir Farm, in parish of Kenchester (Herefs)  
 On R Wye. SO 440418. No sign of mill as such, but very wet channel indicates possible watercourse from 'New Wear' (shown on OS c1830) across the loop of R Wye. This could have given a few feet of head for a mill at the farm. Adjacent to watercourse and farm was **Mill Orchard** on TM (Kenchester) 1843.
- 118 **Field's Mill**, in parish of Madley (Herefs)  
 On Bage Brook. SO 423407. Handsome half-timbered mill with cottage attached still stands but in 1982 is being rebuilt into residence. Mainly seventeenth century with later extensions. Formerly internal wheel, was in place but out of use in 1931. Mill of three storeys, about 33ft x 18ft in plan. **Fields Mills** on Taylor 1754, Price 1817, Bryant 1835; shown as mill on OS c1830, **Corn Mill** on TM (Madley) 1843. 200yd leat, terminal basin in stone. (Ta, P, B, OS, TM; Roy Comm Hist Mon 'Herefordshire', 1931)



Sketch of Field's Mill in parish of Madley (No 118) by Grace Towers.



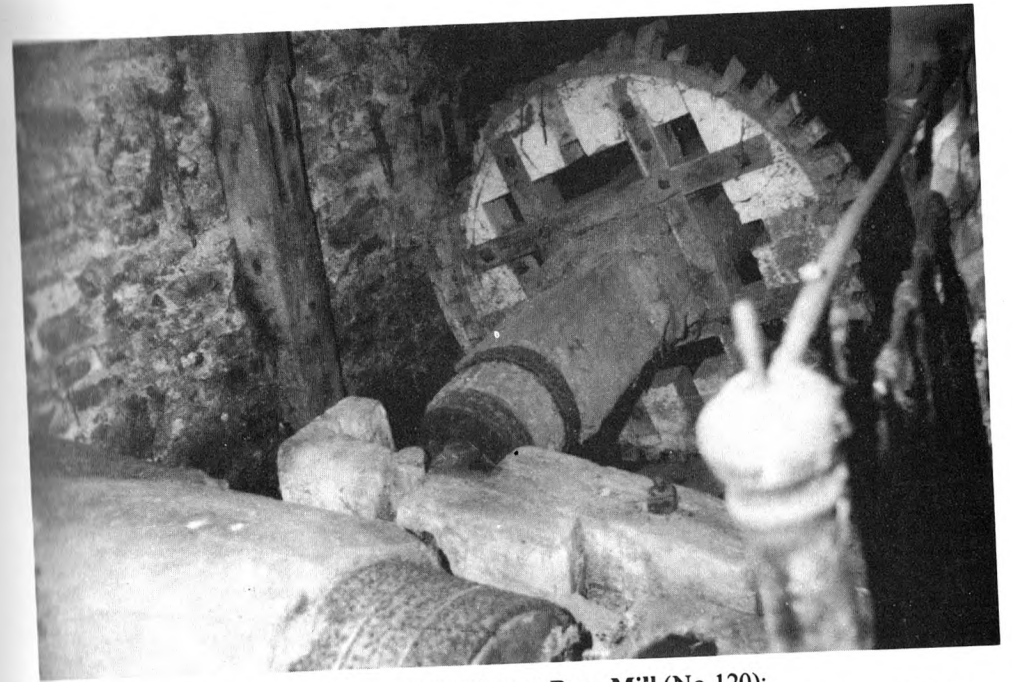
**Bage Mill**, in parish of Madley (No 120), showing brick upper parts on stone-built base, suggesting an early extension or rebuilding.

**119 Fields Place Mill**, in parish of Madley (Herefs)

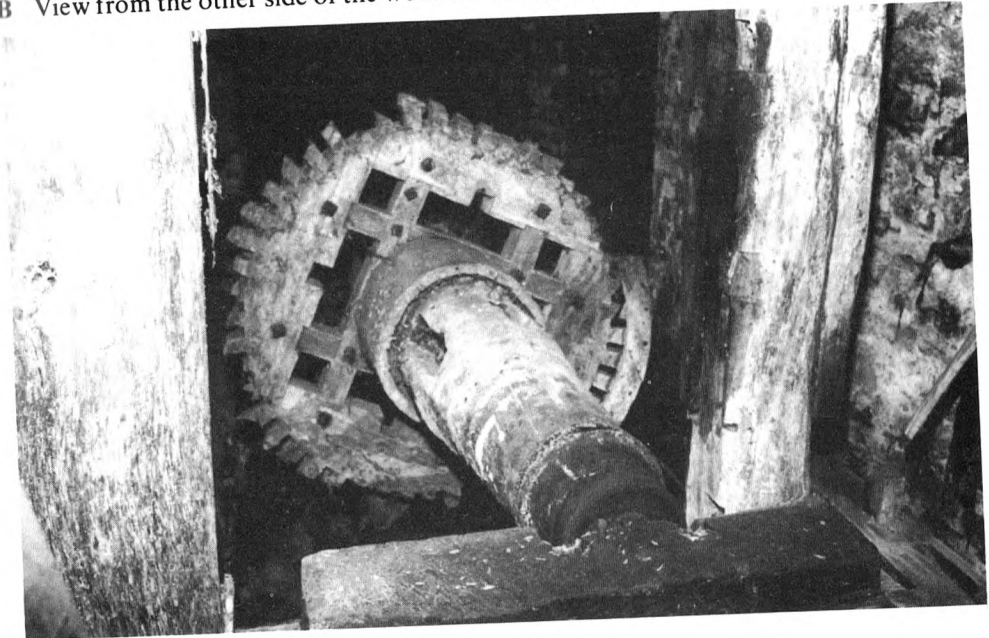
On Bage Brook. SO 421404. The old mill was evidently of stone, but all that now remains is a little of the machinery: remnants of all-iron overshot wheel about 12ft x 4ft, pit-wheel 6ft diam with wooden teeth, iron header box on 12in pipe. Superposed on these remains is a waterwheel pump, wheel about 10ft x 1ft 6in with rod spokes, fed by launder supported on old waterwheel, pump inside galvanised-iron shed driven by crossed belt from pulley on waterwheel shafts. Shown specifically as mill on TM (Madley) 1843, coupled with Field's Mill as 'Fields Mills' on most other early maps.

**120 Bage Mill**, in parish of Madley (Herefs)

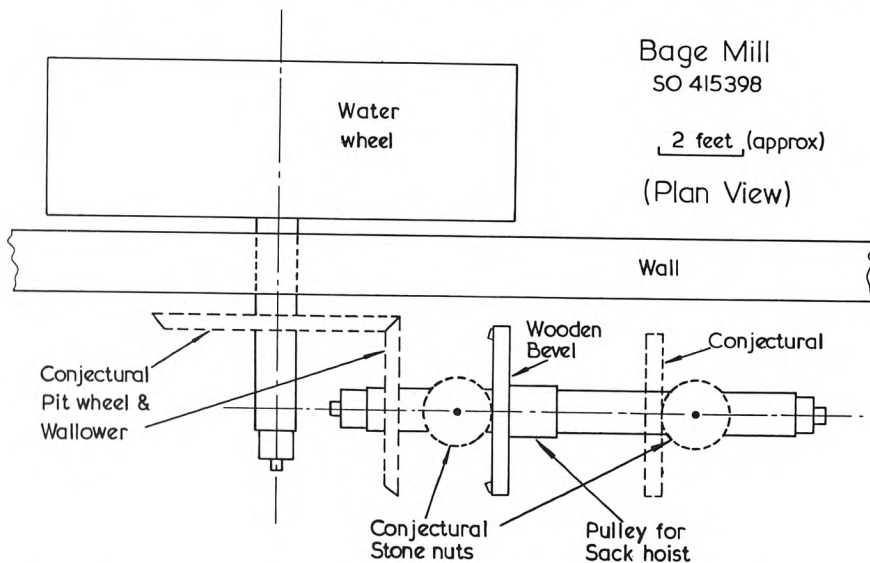
On Bage Brook. SO 415398. Mill building stands, derelict and overgrown, three storeys, brick upper parts on stone base. Broken overshot wheel, external, 11ft x 3ft 8in, iron shroud and buckets, rod spokes, wooden axle. Two pairs French burr stones. Curious wooden shafts and gears on bottom floor (see Fig 1, which gives probable explanation), no other machinery except sack-hoist pulley on second floor and a boulder on first floor. Shown on Price 1817, **Bage Mill** on OS c1830, **Bach Mill** on Bryant 1835 and TM (Madley) 1843. Millers: John Bradshaw 1843, Chas Wheeler 1856-91, Wm T. Wheeler 1895-1905, A. Beevan 1909. Two mill ponds on two streams joining here; stone dam; culverted tail race. (OS c1830, B, TM, S)



Two photographs of remaining mechanism at **Bage Mill** (No 120);  
**A** View over end of waterwheel axle towards the one remaining wooden bevel, ie from the left in the drawing.  
**B** View from the other side of the wooden bevel gear, ie from the right in the drawing.



- 121 **Preston Mill**, parish of Preston-on-Wye (Herefs)  
On tributary of R Wye. SO 384423. No sign of building, reputedly destroyed by fire about 1940. Part of dam and sluice-gap remain, site of pond recognisable, head was probably about 5ft, leat still detectable. Shown as mill on Taylor 1754, Price 1817, OS c1830, Bryant 1835, TM (Preston-on-Wye) 1844; **Mill (Disused)** on OS 1952. No name for mill is ever shown, except by Simmons who gives **Bridge Mill** — a most unlikely name as there is no bridge of any consequence in this parish. Millers: Edward S. Stewart 1825, John Davies 1844, G. Cooke 1856, G. Jones 1863-70, W. Jones 1979, Daniel Jones 1885, Wm Beavan 1891, R. Tipton 1895, J. Jones 1917-22. (Ta, P, B, TM, OS various, S)
- 122 Possible existence of **Rollsford Mill**, in parish of Moccas (Herefs)  
On western headwater of brook flowing through Preston-on-Wye. SO 361422 approx. Shown as **Rollsford Mill**, with watermill symbol, separately from nearby windmill, on Bryant 1835. No likely site discovered.
- 123 Possible existence of **Tibberton Mill**, in parish of Tyberton (Herefs)  
On southern headwater of brook flowing through Preston-on-Wye. SO 384403 approx. Shown as **Tibberton Mill** on Taylor 1754. No signs of mill discovered, and no other map indications.
- 124 Possible site of mill near Monnington-on-Wye, on boundary of parishes of Monnington-on-Wye and Byford (Herefs)  
On Maddle Brook. SO 378433 approx. Building exists, now two cottages, known as 'Old Mill'. Part of demolished culvert and two conglomerate millstones are only signs of possible former use as mill. Shown as mill on Price 1817, OS c1830, Bryant 1835 (with pond).



Drawing of the curious layout layout of wooden gearing at **Bage Mill** (No 120). Fig 1.

- 125 **Scut Mill**, Mansell Gamage (Herefs)  
On Maddle Brook. SO 386449. Only two pieces of wall remain, but leat about 1/2-mile long is well-preserved, and tail race visible. Mr M. Oakley has negative taken in 1961 showing half-timbered mill with internal waterwheel. Shown as mill on Taylor 1754, **Scut Mill** on Price 1817, OS c1830, Bryant 1835 and TM (Mansell Gamage) 1842; **Mill (Disused)** on OS 1952. In 1934 the mill was used as a workshop and store, with the waterwheel on the south side of the building. Millers: Richard Smith 1842, W. Griffiths 1856, Geo Price 1863-1900, Chas & Wm Price 1905-13, Chas Price 1917. (Ta, P, B, TM, OS various, S; Roy Comm Hist Mon, 'Herefordshire', 1934)
- 126 **Mill** in parish of Kinnersley (Herefs), on boundary with Almeley  
On Letton Lake brook or tributary thereto. SO 348502. Pond remains, now much silted and only about 30yd x 10yd; heap of building stone by outlet of pond presumably indicates site of mill. Line of old tail race just detectable. Shown as mill on Price 1817, Bryant 1835 and TM (Kinnersley) 1839. (P, B, TM)
- 127 Possible mill site at Almeley (Herefs)  
On Letton Lake brook. SO 332514. No sign of mill, but dam in stream, outline of pond and line of leat. **Almeley Mill** on Taylor 1754; TM (Almeley) 1849 shows **Mill Orchard/Field**. No other evidence found.
- 128 **Mill** near Newchurch, parish of Kinnersley (Herefs)  
On Letton Lake brook. SO 354512. Foundations of building about 25ft x 25ft remain, with overshot wheel 19ft x 1ft 8in, wooden axle and arms, iron boss and shrouds etc, iron headbox 1ft 6in square x 8ft high fed from pond by 15in iron pipe. 'Kington Foundry' on some segments of wheel. Wheel-pit over 9ft wide and appears to have been built for earlier wider wheel. Two pairs of 4ft stones remain *in situ* with shafts and stone nuts; one pair French burr, other pair has conglomerate bedstone with French runner. No other machinery remains. Pond about 50yd square, still holds water, mill built into dam. Mill shown on Bryant 1835, on TM (Kinnersley) 1839, and as **Corn Mill** on OS 1905.
- 129 **Bradley's Mill**, in parish of Kinnersley (Herefs)  
On Upcott Brook. SO 326488. No definite remains identified, but there seems little doubt of approx location from map references. **Old Mill** on Taylor 1754, so there has probably been no mill for two centuries. **Bradley's Mill** on Price 1817 and OS c1830; **Bradeleys Mill Bridge** on Bryant 1835; **Bradley Mill Bridge** on OS 1904 and 1952. (Ta, P, B, OS various)
- 130 **Waterwheel Pump**, in parish of Kinnersley (Herefs)  
On Upcott Brook. SO 326488. Derelict brick building, 20ft x 8ft, with pitched roof in corrugated-iron, containing breast wheel 6ft x 1ft driving vertical plunger pump; built into stone-lined channel tributary to main brook. Almost at probable site of Bradley's Mill, so this channel might be tail race of the former mill.
- 131 Possible site of mill in parish of Winforton (Herefs)  
On small stream joining brook from Eardisley. SO 303463. No



evidence on the ground, but ponds and watercourses make it possible site of mill. **Great/Lower/Upper Mill Field** on TM (Winforton) 1839. Alignment of watercourses makes a mill channel which cuts across a large loop of the R Wye a distinct possibility.

2 Possible site of a lower mill at Eardisley (Herefs)

On Eardisley Brook. SO 313489. No physical evidence. Shown as **Saw Mill** on OS 1904; **Mill** on OS 1952.

3 Possible site of a middle mill at Eardisley (Herefs)

On Eardisley Brook. SO 314491. No physical evidence. Shown as **Mill** on OS 1952; the only mill in Eardisley to be shown on 1in OS 1971.

4 **Upper Mill** at Eardisley (Herefs)

On Eardisley Brook. SO 311492. Three-storey mill stands with adjoining brick mill-house. Two lower storeys stone-built, top storey half-timbered with wattle in-filling. In 1979 the roof was still of stone tiles, but in 1980 was replaced by plastic sheeting. Some machinery remains, notably three pairs of stones (some French burrs, some of monolithic type including at least one of conglomerate). Waterwheel was internal, probably about 16ft x 5ft 6in, pitch-back; only wooden axle remains. Iron header-box fed by two iron pipes running underground from pond, (now dry), which was fed by long leat. Shown as mill on Taylor 1754, on TM (Eardisley) (undated), and on OS 1952. Millers: J. Duggan 1856-63, Wm Price 1867-70, Wm Tudor & Alfred Barber 1879, Wm Jones 1885-91, David Jones 1895. (Ta, TM, OS, S)

**Upper Mill, Eardisley (No 134)**, as it was before the roof was replaced by plastic sheeting in 1980.



135 **Clock Mill**, in parish of Clifford (Herefs)

On brook formed by confluence of West Brook and Bach Brook. SO 290455. Mill building remains as a feature in the newly-landscaped gardens of a large stone-built modern house; still retains derelict waterwheel about 12ft x 2ft, of iron except for wooden axle. No other machinery remains, leats and ponds obliterated. **Clock Mill** on Taylor 1754, Price 1817, OS c1830, Bryant 1835, TM (Clifford) 1842. **Clock Mills** on 1in OS 1971. Millers: John C. Jenkins 1799, John Powell 1842, J. Russell 1856, Wm Harris 1863-70, Reece Evans, 1895, 1905; Wm Jones 1900, James Lloyd 1909-17, John Edwards 1922-9. (Ta, P, B, TM, OS various, S)

136 Possible existence of **Middlewood Mill**, in parish of Clifford (Herefs)  
On West Brook. SO 288445. Shown as **Middlewood Mill** on Taylor 1754; no other map or field evidence.

137 **Farm Wheel** at Westbrook Manor Farm, parish of Clifford (Herefs)  
On tributary to West Brook. SO 284438. Derelict overshot wheel, iron, 6ft x 2ft, in wheel-pit beside road; axle carries bevel gearing which once drove a shaft under the road to drive machinery in barn opposite. Not used since about 1940 according to owner.

138 **Whitney Mill**, (Herefs)

On small brook on north of R Wye. SO 278482. Three-storey stone building exists with adjoining mill-house. Machinery gone, wheel-pit suggests overshot wheel about 18ft x 4ft, fed through 12in iron pipe from now-dry pond about 25yd square. **Whitney Mill** on Taylor 1754,

**Whitney Mill (No 138)**. A corner of the wheel-pit is just visible on the far left-hand side.



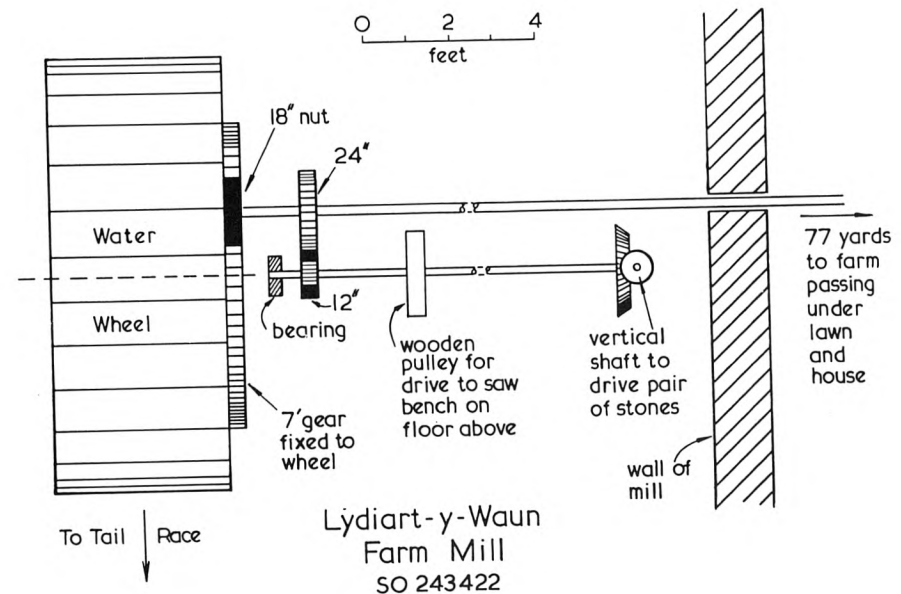
Mill on Price 1817, **Old Mill at The Mill Half** on TM (Whitney) 1840; **Mill Heath** on OS c1830, **Mill Half** on Bryant 1835, **Corn Mill** on OS 1904, **Mill** on OS 1951, **Mill Half** on Iin OS 1971. It would seem that the present derelict mill was a rebuilding or refurbishing of an earlier mill which operated in the eighteenth century but was out of action by 1840. (Ta, P, B, TM, OS various)

- 139 Possible existence of **Cabalva Mill**, parish of Clyro (Radnors)  
On small brook on west bank of R Wye. SO 243470. Suitable fall of water available, but no physical evidence of mill. **Cabalva Mill & Ferry** marked on Bryant 1835, but without watermill symbol. TM (Clyro) 1840 shows small stream and pond with building just below pond; entered as 'Mill House Garden', the absence of commas leaving ambiguity as to whether mill existed at that time.
- 140 **Whitley's Mill**, in parish of Clyro (Radnors)  
On Cabalva Brook. SO 218462. Ruins of mill remain on the steep valley slope — mainly just the lower parts of the stone walls. Wheel-pit quite distinct, indicating probable overshot wheel about 15ft x 4ft; but the long, well-constructed leat terminates about 30ft above the stream, so much of the head was lost in the tail race. Adjacent to wheel-pit the mill has a plan about 40ft x 18ft, and has a fireplace in the wall against the bank. No machinery remains except three millstones: one French burr runner 46in diam, one conglomerate runner 44in diam, and a broken French burr bedstone 46in diam. **Whitley's Mill** on OS c1830, also 1905; **Whitlys Mill** on Bryant 1835, shown as mill on TM (Clyro) 1840; local name is 'Whitney's Mill'.
- 141 **Clyro Mill (Radnors)**  
On Clyro Brook. SO 218438. Three-storey mill building remains, now with corrugated-iron roof. Plan about 36ft x 20ft. No machinery remains. Hurstings for two pairs of stones. Had external wheel on south wall, apparently breast-shot from 12in iron pipe through dam of small terminal pond at end of 50yd leat. Had fireplace on north wall on ground floor. Shown as mill on Price 1817, and on TM (Clyro) 1840, **Clyro Mill** on OS 1905, **Clyro Mill (Disused)** on OS 1932.
- 142 Possible mill site in parish of Clyro (Radnors)  
On Clyro Brook. Approx. SO 206440. TM (Clyro) 1840 shows **Mill Piece** here.
- 143 Probable mill at Pont Faen, parish of Clifford (Herefs)  
On Hardwicke Brook. SO 236438 approx. Now no sign of mill itself, but leat starts at derelict weir at SO 242439 and follows contour towards site given. Shown as mill on Taylor 1754; TM (Clifford) 1842 shows **Mill Pond Piece**.
- 144 Possible site of **Hardwick Mill**, parish of Clifford (Herefs)  
On Hardwicke Brook. SO 257443. Building at site much altered and now no tangible evidence of mill, although site quite feasible. Shown as mill on Price 1817 and Bryant 1835. **Hardwick Mill** on TM (Clifford) 1842 and on OS 1890. Marked on OS 1951.

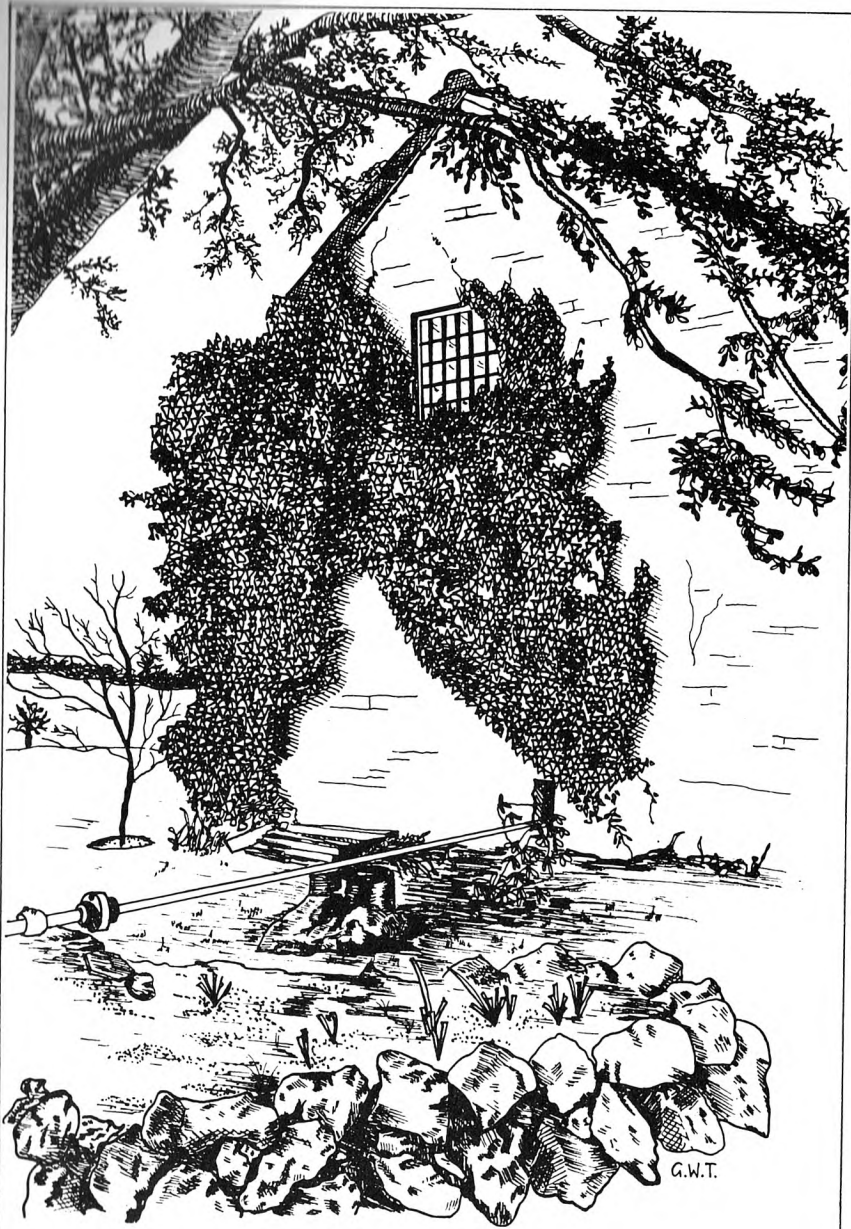
It is important to notice that Taylor 1754 did not show this mill, but did show two others lower down the brook at about SO 248442

and 252444. At neither of these locations has any sign of a mill been found. There is thus some uncertainty about mills on this brook, but undoubtedly at least one **Hardwick Mill** did exist.

- 145 Possible mill site near Lower Broadmeadow Farm, parish of Clifford (Herefs)  
On Hardwicke Brook. SO 265428. 'Mill Cottage' is a curious part-stone and part-half-timbered building which does not appear to have been converted from a mill, but there are no other remains of building. Yet a leat (5ft wide and quite deep) runs to within 40ft from a distance of 140yd, giving a head of 15-20ft. There is a deep ancient road running within 100yd. Mill shown at this location on Price 1817 and Bryant 1835 (with mill symbol), but no mill shown on TM (Clifford) 1842, although two houses are shown here. 'Mill Cottage' appears only on OS post-1900. The site remains unexplained.
- 146 **Hay Mill**, in parish of Hay-on-Wye (Brecons), but on boundary of Cusop (Herefs)  
On Dulas Brook. SO 230427. Now the street name 'Mill Lane' is the only sign of the mill's former existence. Shown as **Mill** on Bryant 1835 but not on TM of either parish, nor on OS 1905. Nevertheless, Mr Underhill of Hay remembers taking grain to the mill and now has two pairs of stones; he says mill worked until 1938.  
At an earlier period there was a fulling mill here, probably on the same site (see G.L. Fairs, 'The woollen industry in Hay', *Nat Lib Wales J*, 21, 1980, pp225-8)



Plan of the drive arrangements at Lydiart-y-Waun Farm Mill (No 147). Fig 2.

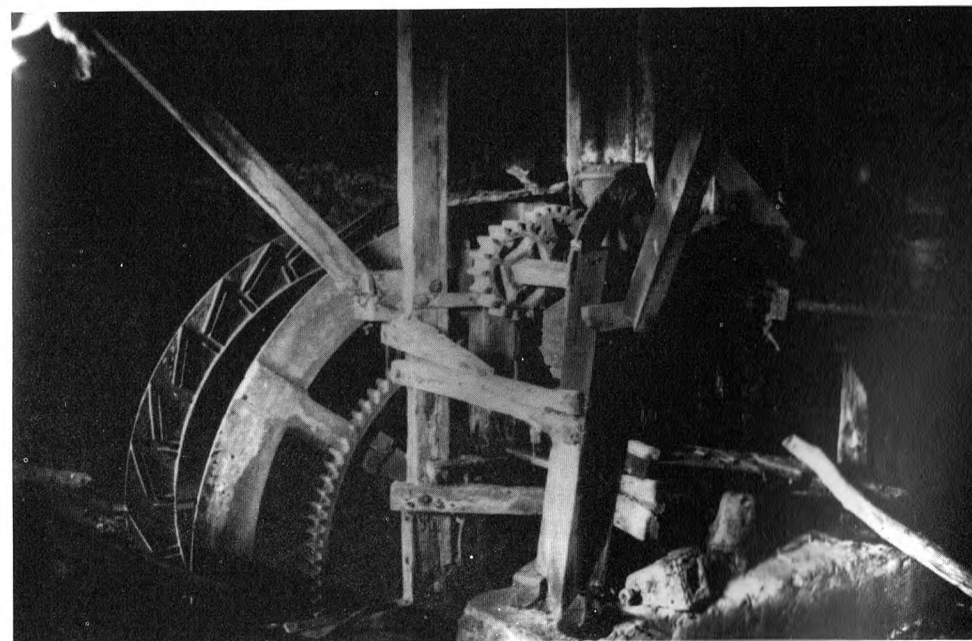


Sketch of the ivy-covered end wall of Lydiart-y-Waun Farm Mill (No 147), showing the long transmission shaft leaving the mill to cross under the lawn to the farm. Sketch by Grace Towers.

**147 Lydiart-y-Waun Farm Mill**, in parish of Cusop (Herefs)  
 On tributary to Dulas Brook. SO 243422. Mill built against dam of pond. All machinery remains, but waterwheel (internal, overshot, 10ft x 4ft) has its wooden parts (soleplates and buckets) missing. A 7ft spur gear attached to the arms of the wheel drives an 18in spur attached to a shaft about 90yd long which passes through the mill and out across an open space, then under the lawn and under the farm-house to the farm buildings behind. Near the waterwheel, this shaft carries a 24in spur which engages a 12in spur on a short parallel shaft which carries firstly, a wooden pulley to provide power for a saw-bench upstairs, and secondly, a bevel gear driving a vertical shaft for a single pair of French burr millstones. (See Fig 2). There is also a boulder in excellent condition in a well-made cupboard, but the drive to it is incomplete. Altogether an attractively situated, handsome and most interesting mill. Shown as **Corn Mill** on OS 1889, **Mill (Disused)** on OS 1905. Nevertheless has the appearance of much more recent use.

**148 Lower Mill**, in parish of Cusop (Herefs), but on boundary of Hay (Brecons)  
 On Dulas Brook. SO 237414. No sign of mill. Shown on Taylor 1754, **Lower House Mill** on Bryant 1835, not on either TM, nor on OS. In 1867 Wm Harris was the miller here. (Ta, B, S)

Photograph of the bucket-less waterwheel and adjacent gearing at Lydiart-y-Waun Farm Mill (No 147).





**Cusop Mill (No 149).** The old mill building, on the left, has been made into a residence.

**149 Cusop Mill (Herefs)**  
 On Dulas Brook. SO 239414. Three-storey mill building now a residence, but retains appearance of a large mill (about 45ft x 20ft plan). Believed to have ceased milling in early 1900s. Turbine put in to generate electricity in 1920s. Shown as mill on Taylor 1754 and Price 1817, **Cusop Mill** on Bryant 1835 and on TM (Cusop) (undated), **Cusop Mill (Corn)** on OS 1889. Millers: Thos Hadley c1840, B. Boucher (and others?) 1856-63, Wm Baylis 1867, Chas Bowen 1870, Wm Wilkinson 1879, John James 1885-1905. Leat about 200yd long, crosses road by culvert, to large stone-lined terminal pond now a lawn.

**150 Paper Mill**, in parish of Hay (Brecons), on boundary of Cusop (Herefs)  
 On Dulas Brook. SO 243407. Bridge crosses brook (and England/Wales boundary) beside 'Paper Mill Cottage' and ground rises on the Welsh side to what must have been the mill site. There is a mill pond formed by a stone dam, a possible wheel-pit at one end of the dam, a wooden-floored water channel leading to a retaining wall; but there is no clear evidence of where the mill stood or how it was arranged. Nor is the documentary evidence clear: just a **Mill** on Taylor 1754,

**Paper Mill** without mill symbol on Bryant 1835; TM (Hay) 1847 shows **Llangwathen Mill** here, owner Mrs Jane Pritchard, occupier Jas Meek; **Upper Mill (Corn)** on OS 1889, **Paper Mill (Disused)** on OS 1905. There is no mention of a paper mill anywhere near here in A.E. Davies, 'Paper Mills and paper makers in Wales 1700-1900', *Nat Lib Wales J*, 15, 1967-8, pp1-30.

**151 Possible site of Llangwathen Mill** in parish of Hay (Brecons), on boundary of Cusop (Herefs)  
 On Dulas Brook. SO 246405. There is a building here with this name, now effectively a single-storey cottage on the steep slope of the dingle, opening to the higher ground, and standing on a large cellar opening to the lower ground. No indication of any use of site or building for a mill. But site clearly marked as mill on Taylor 1754, Price 1817; TM (Hay) 1847 shows only *house* called Llangwathen here; **Llangwathen Mill** on OS 1889, **Llangwathen Mill (Disused)** on OS 1905. Note that the TM shows a Llangwathen Mill at SO 243407, the 'Paper Mill' site (*qv*).

## The Ironworks

Iron has been made in the vicinity of the River Wye since Roman times at least, the Forest of Dean providing a good quality ore and abundant wood for charcoal, with the river providing the means of transport for both the raw materials and the finished product. There is, however, no evidence of water power being used in the production of iron in our area before the introduction of the blast furnace in about 1500; sites earlier than this are therefore outside the scope of this survey.

The blast furnace demanded continuous blowing, and water power was the only power suitable to operate the blowing apparatus. Moreover, the greater quantity of iron that a blast furnace could produce made it necessary to mechanise the secondary forging process by the use of more powerful water-driven hammers.

Research into the various iron-making sites is hampered by the imprecise use in contemporary sources of the terms 'furnace', 'forge' and 'iron works' and by the use of different place names for what could possibly be the same site.

Between Monmouth and Hay eight sites are recorded and with one exception all were downstream of Ross, this indicating the importance of the Forest of Dean to the industry. These sites were at New Weir, Whitchurch, St Weonards, Lydbrook, Bishopswood, Ross, Linton and Carey. As was the general practice with all water-powered installations, most of these were located on the tributaries and not on the main river. Some of the reasons for this were explained in Chapter One; basically the construction of a weir high enough to give a head of water for a waterwheel was expensive, and objectionable because it caused flooding and impeded navigation. For the Wye, an Act of Parliament at the end of the seventeenth century prohibited all weirs below Hay except that at New Weir, where an efficient lock was to be maintained. It is interesting that the only certain site of water-powered works on the Wye itself was that at

New Weir; there is adequate documentary and archaeological evidence of this site. The ironworks at Carey may have been on the main river, but nothing is known of its site; if it was on the Wye, it must have ceased before the end of the seventeenth century.

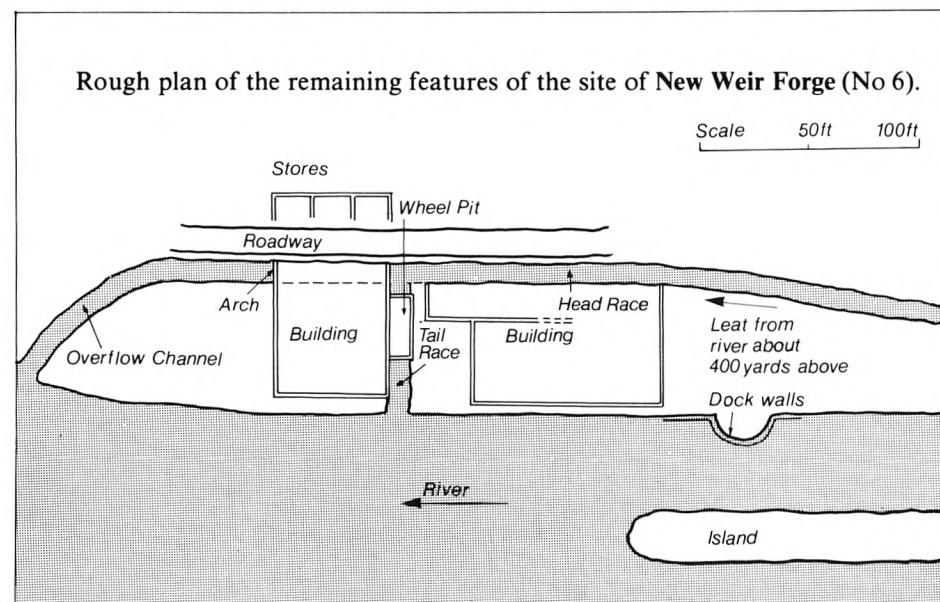
A brief summary of the known history of each of the sites follows. All the information not otherwise referenced may be assumed to be derived from Hart.<sup>1</sup>

### New Weir Forge (Gazetteer and map No 6)

This appears to have been built, possibly on an earlier site, in 1684 by George White, lessee of Monmouth Forge, and Thomas Fletcher, both of Monmouth, for the fining of pig iron.<sup>2</sup> Power was obtained from the main stream of the Wye, and one of the attractions of the site was probably the fact that a weir had existed here for a very long time. As already noted, this was the only weir allowed to remain in the mainstream of the Wye by the Act of 1695-6. Although it is possible that a lock already existed, the owner of the property, the Earl of Kent, was required by the Act to provide one to allow the passage of boats; a rent-free house for a lock-keeper was to be provided, and no fishing was to be carried on.

After the death of George White senior, the New Weir works continued under his son, also George, and the business appeared to prosper. In 1753 the son retired, and a lease was granted to John Partridge, ironmonger of Ross, for 14 years of:

The Weir, Lock, Forge, fishing, Dwelling house, Slitting Mill, Storehouse and including the royalty of fishing at a yearly rent of £270 and £10 to be paid to the Lock keeper.



Partridge also purchased the stock of materials valued at £1175 9s 4d which included coal, pig iron, German steel, boats and fishing equipment. The complete inventory is given by Lloyd.<sup>3</sup>

The original lease continued in the family until 1798, when on the death of Mrs Osborne of Monkmill in Gloucestershire the contract ceased, and the works became the property of George Griffin.<sup>4</sup> It is probable that soon after this the business ceased. The lease was advertised at intervals between 1811 and 1815,<sup>5</sup> the property comprising:

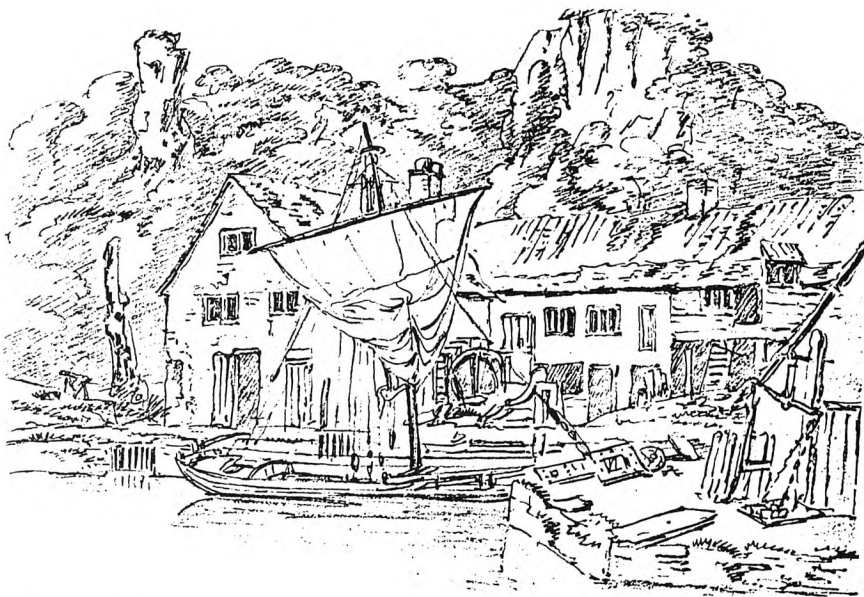
A capital IRON FORGE, with Two Hammers, Three Fineries, a Chafery, an excellent Rolling Mill, a commodious DWELLING HOUSE [etc] together with a valuable and extensive Fishery in the River Wye, now and for many years past in the Occupation of William Partridge, Esquire.

In spite of additional attractions, such as the possible attachment of a 'desirable Farm' and 'valuable Limestone Quarries', there could have been no taker, and in 1820 it was recorded that:

The extensive iron works . . . have been abandoned for some time and are now fallen into almost total decay.<sup>6</sup>

The weir became very dilapidated, but the lock continued in use for a few more years.

There are still some fragmentary tangible remains of the works. In 1978 the Forestry Commission partially cleared the site of over-



Drawing of 'Forge at New Wear' by J. Powell, about 1810. (Reproduced by kind permission of the owner, Mr M.P. Watkins.)

growth, and we took the opportunity to make a rough survey, which is shown in the plan reproduced here. It would seem that deterioration of the remains had occurred very rapidly just before our survey (perhaps part of the clearance process?), because Paar, in 1974, had said that 'very tangible remains of the forge buildings survive today, up to gable height in one case.'<sup>7</sup> We found nothing but fragments of walling and an arch, and at the time of writing, four years later, even these are largely invisible under vegetation. Our plan shows our very tentative interpretation of the remains. A point of some importance is that a plan of 1779<sup>8</sup> shows the weir only about the river's width above the forge, and the leat only about 130yd long and only about 10-20ft from the river bank. Our survey shows the leat over three times as long and three times as distant from the river bank. No explanation of this discrepancy can be offered at present.

Joseph Powell's pencil sketch of the 'Forge at New Wear', reproduced here also, in some ways agrees with our survey. The waterwheel and the building on the left seem to have the correct relationship, although the building on the right does not agree very well. One difficulty is that Powell's sketch does not really look like a forge; where are the chimneys of the hearths? Moreover, the background is much more like that of the left bank of the river than the right bank on which the forge was undoubtedly sited. Perhaps we must allow the artist his licence and not expect too much from his work!

#### Old Forge, Whitchurch (Gazetteer and map No 10)

In spite of the persistence of the name 'Old Forge' for this area, over a period of nearly two and a half centuries, there is in fact much better evidence of a former blast furnace here than of a forge.

There is adequate documentary evidence that there was a blast furnace near the confluence of the Garren Brook with the River Wye at Whitchurch, but little is known of its life and exact location. The earliest known reference to the furnace is in correspondence with the Earl of Shrewsbury in 1575 when it was probably newly built.<sup>9</sup> The Fourth Order of the Mine Law Court which sat at the Speech House in the Forest of Dean on 27 April 1680 set the price of iron ore to be delivered to Whitchurch at 7 shillings per dozen Winchester bushels.<sup>10</sup> This implies that the furnace was then in operation, but nothing is known of it after this.

The evidence for a forge is much less definite. The names Goodrich, New Weir, Whitchurch and Newmill have all been associated in the literature with what was apparently the same forge. It was stated above that New Weir Forge was built in 1684, on a site that may well have housed an earlier forge. It is possible that the only forge in this area had been that at New Weir (less than two miles from the site known as Old Forge, and only just over a mile from Whitchurch village). Our first evidence of the name 'Old Forge' is Taylor's map of 1754, and this is really the only evidence. It could well have arisen from a confusion between the terms 'furnace' and 'forge'; since there was certainly an iron works there at least until 1680, which is known to have been a blast furnace, it is tempting to conclude that there never was a forge at the Old Forge site.

Iron was carried from Whitchurch (and presumably also iron ore

to Whitchurch) in small boats,<sup>11</sup> and it is likely that the quay, of which there are still some remains, near the mouth of the Garren Brook, was used by the ironworks for this purpose. There are two old buildings at this place, and if they can be shown to be old enough, they too may have been used as warehouses by the ironworks.

#### Old Furnace, St Weonards (Gazetteer and map No 34)

There is a paucity of documentary material about this furnace. By oral tradition it was working in 1645<sup>12</sup> and about 1677-8 it was added to the Foley possessions.<sup>13</sup> The furnace is listed in the Fourth Order of the Mine Law Court of 1680 when twelve Winchester bushels of ore were to be delivered to it for 10 shillings,<sup>14</sup> and there is a stone plaque in the wall of a farm building on the site which states 'This Furnace was Rebuilt in 1720 by William Rea, Gent'. The building is one of a number, many of which have been altered probably on several occasions, and none of which is recognisable as a blast furnace. The furnace was closed in 1731.<sup>15</sup> Parts of a long leat are readily identifiable, and make it certain that this is the correct site.

#### THE LYDBROOK VALLEY

There is some evidence that there were two blast furnaces here, but only one is clearly documented. This is called both Howebrooke and Lydbrooke Furnace and is believed to have been at site 52. It was first built about 1591, rebuilt in 1612-13, again in 1632 and 1662, and finally sold to the Crown for demolition in 1674. It is significant that the very detailed 'Inventory' of the ironworks in the Forest of Dean<sup>16</sup> mentions only one blast furnace at Lydbrook, and it seems possible that the different names by which it was known and the several occasions on which it was rebuilt, with periods of inactivity in between, gave rise to the belief that there were two furnaces. If indeed there was a second furnace its location is unknown.

There were seven major iron-making sites at Lydbrook, the earliest being in operation about 1590 and the last in 1925.<sup>17</sup> Of the seven, four were seemingly forges, one a wireworks, and two were known as ironworks. Tinsplate was also produced at two of the sites, and Osmond iron at the Upper Forge; there was also an anvil works.

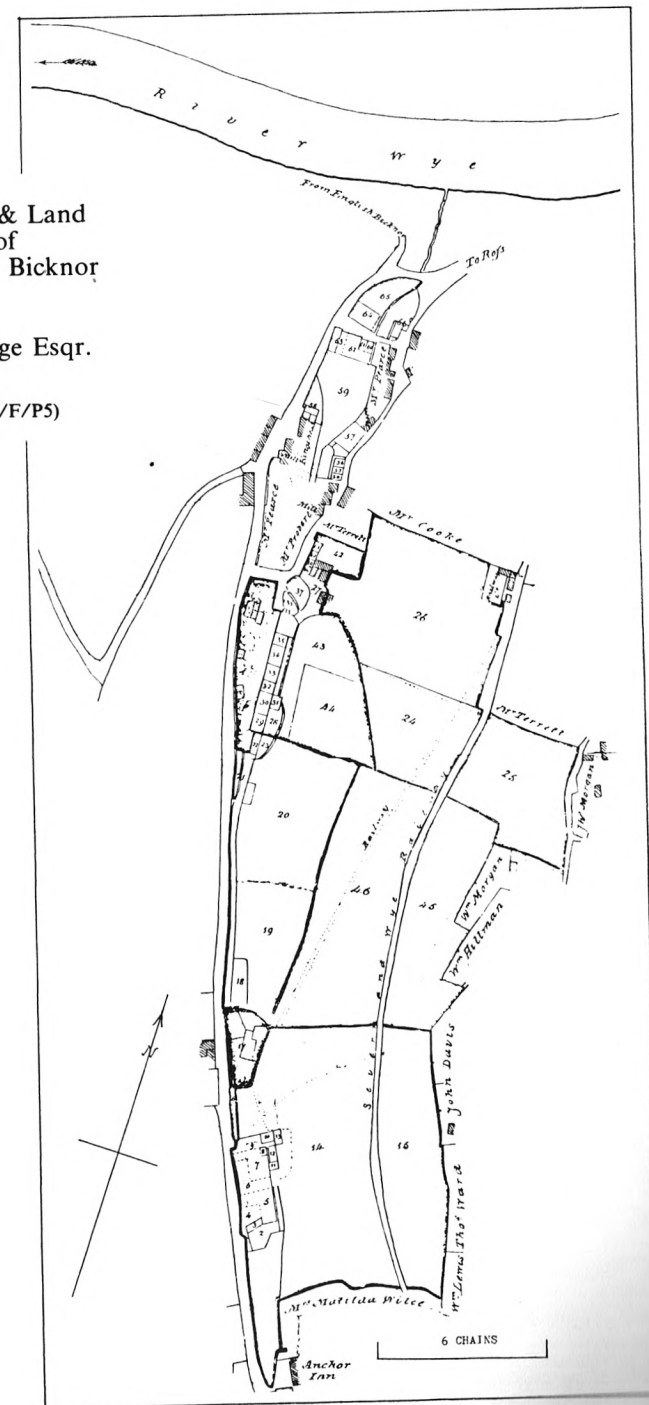
At various times the names of the works changed; Middle Forge became Upper Forge, and the Lower Forge probably became Middle Forge. Such changes in name and product make the identification of some of the sites uncertain, but the seven sites will be discussed in gazetteer order. The three lower sites (gazetteer and map Nos 43, 46 and 47) are recorded on the plan of 1834 reproduced here, showing in detail the component parts of the works at that date.

#### Lower or Lydbrook Forge (Gazetteer and map No 43)

This was built about 1610 and an estimate for repairs of 11 June 1760 shows that it was then a chafery, or at least included a chafery. Little is known of the works after about 1834, but by that time a steam engine had been installed. Tradition lingers that part of the works became a corn mill. The silted-up pond remains, partly used as a garden. The nearby Forge Hammer Inn perpetuates the iron-working tradition but no buildings remain which can be identified with iron working.

Plan of  
Lidbrook Iron & Tin Works & Land  
Situate in the Parishes of  
Newland, Ruardean & English Bicknor  
in the County of  
Gloucester  
The Property of John Partridge Esqr.  
1834

(Hereford County Record Office, E12/F/P5)



For key to numbers,  
see pages 60 and 61

Simplified 'Reference' to Map of Lower Lydbrook

No	Premises	Occupiers	Parishes
1	Upper Forge Pool	Messrs Pearce & Alloway	Coleford
2	Yard	do	Tything & Newland Parish
3	Smiths shop	do	do
4	Yard	do	do
5	Rolling mill & Forge	do	do
6	Fly wheel, waterwheel &c	do	do
7	Rolling & Bar mill	do	do
8	Tin furnace	do	do
9	Bloom furnace	do	do
10	Coal Yard	do	do
11	Engine-house	do	do
12	Boiler	do	do
13	do	do	do
14	Lower Rolling mill hill	do	do
15	Upper do	do	do
16	Part of Railway from Upper Works to Middle Works	do	do
17	House and garden	do	do
18	Garden	do	do
19	Cinder hill	do	do
20	Brook meadow & Sawpits	do	do
21	Remainder of Railway from Upper Works to Middle Works	do	do
22	Shed	do	do
23	Part of Garden	do	do
24	Buckhills	do	do
25	Upper do	do	do
26	Tumpshill	do	do
27	Part of do	do	do
28	Part of Garden	do	do
29	Shear Shop	do	do
30	Scale-house	do	do
31	Cold Rolls, Waterwheel &c	do	do
32	Scouring-house	do	do
33	Tin-house	do	do
34	Wash-house	do	do
35	Store-house	do	do
36	Garden	John Jones Senr.	English Bicknor
37	do	John Huzzey	Coleford
38	House	do	Tything & Newland Parish
39	do	Job Lewis	do
40	do	William Haddock	do
41	do	Edward Tamplin	do
42	Gardens	-	do
43	do	-	do
44	The orchard	Messrs Pearce & Alloway	do
45	Clover piece	do	do
46	Middle piece	do	do
47	Tin-house-yard	do	do
48	Office & warehouse under	do	Newland & E Bicknor
49	Carpenters shop	do	English Bicknor
50	House & Garden	Richard Tamplin	do
51	do	John Jones Senr.	do
52	House	John Jones Junr.	do
53	High leys meadow	Pearce & Alloway	do
54	House & part of garden	Thomas Huzzey	Ruardean

55	do	Henry Burgum	do
56	do	John Lewis	do
57	Charcoal yard	Pearce & Alloway	do
58	House & garden	Jeremiah Scott	English Bicknor
59	Pool	Messrs Pearce & Alloway	do & Ruardean
60	Boiler	do	do
61	Engine-house	do	do
62	Forge	do	do
63	Charcoal-yard &c	do	do
64	Charcoal-house	do	E. Bicknor
65	Yard	do	Ruardean
66	House and garden	James Thomas	do

**Iron/Tinplate Works** (Gazetteer and map No 46)

This site produced the first tinplate manufactured at Lydbrook around 1800, but as the site has been completely redeveloped there are few remains of the original works to be seen. It was operated as a single manufacturing unit with the works immediately upstream at site No 47, and finally ceased operation in 1925.

**Middle Forge/Tinplate Works** (Gazetteer and map No 47)

This works was built about 1590 and by 1702 was known as the Upper Forge, and consisted of a finery and chafery. At one time it specialised in the making of Osmond iron for the wireworks at Tintern and Whitebrook, and in about 1625 was producing wire itself. Before starting the manufacture of tinplate in association with the works below it, it was known as the Rolling Mill and possibly also as Lower Forge. By 1834 a steam engine was in use, but the lower tinplate works seems to have become the more important unit, and by the end of the century the Middle Forge site was closed. It has now been levelled and redeveloped and nothing of the original works remains.

**Wireworks** (Gazetteer and map No 48)

This was built about 1818-20 as a wireworks extension of the ironworks a short distance upstream (site No 49). The works was served by a large pond and produced wire for fencing, and later, for telegraph use. As a result of poor trade the works closed in the last decade of the nineteenth century, and today the pond remains as a dry overgrown area with a substantial dam still standing. The site of the wireworks has been cleared and is now used as a car park for the nearby Anchor Inn.

**Ironworks** (Gazetteer and map No 49)

In 1818 this ironworks was purchased from the Crown and improved and enlarged. Iron for agricultural purposes, smith work and horse nails were produced and by 1880 about fifty men were employed, the principal market being Birmingham. With the adjacent wireworks the business closed in 1890-1900. The site is now cleared and the pond, filled in, forms a car park for the British Legion Club.



### Upper Forge (Gazetteer and map No 50)

This was built around 1590, had a relatively short life, and by 1668 had disappeared. Little is known of this works and there are no visible remains. By 1702 the name Upper Forge had been transferred to the Middle Forge (site No 47).

### Kings Howebrooke Forge (Gazetteer and map No 51)

This works was built in 1612-13. In 1635 it had two fineries and one chafery. From the inventory of that date it appears to have been a substantial and well-equipped works, but despite this it was demolished in 1650. In later years a corn mill occupied the site.

### Bishopswood Furnace (Gazetteer and map No 53)

Iron was made here by blast furnace at least by the last decade of the sixteenth century, but it is not known just where the site was. There was a blast furnace operating certainly in the latter part of the seventeenth century, but it is believed to have ceased by 1751. Then a new furnace was built at site No 53, and this is known to have continued into the early nineteenth century. Various travellers reported the furnace at work; eg in 1806: 'Pass an iron-work called Bishop's Wood furnace, and observe several pigs of iron ready to be conveyed to the barges.'<sup>18</sup> A branch of the Severn and Wye Railway to the ironworks was authorised in 1810<sup>19</sup> but smelting had apparently ceased by 1814. There was also a forge at Bishopswood, probably from an early date, and this is known to have been in existence (and probably in operation) up to 1816, for in that year its stock of iron was seized by the agent of the Severn and Wye Railway Company to help defray its debts to the railway company.

### Ross and Linton

There were undoubtedly ironworks at these two places, and Schubert<sup>20</sup> refers to them as furnaces; however, there is no certainty that they were not forges. The ironworks at Ross were mentioned in 1597, and still in production in 1659. The site may have been in Walford parish rather than Ross itself. Linton ironworks were much less significant, being mentioned in 1680, and out of production in the last decade of that century. A possible site is in the area of Steel Works Farm at SO 676268, where a quantity of slag has been found, but this is on a tributary of the Ell Brook which flows east into the River Severn and not into the Wye.

### Carey (Gazetteer and map No 92)

An agreement was made early in 1628 by Sir John Scudamore with his cousin William Scudamore for the construction of an iron forge on the latter's land at Carey Mill.<sup>21</sup> The forge was clearly working in 1620, for at the end of that year the cost of making bar iron there was recorded. It is not known how long it continued. The site was clearly the same as Carey Mill, but we have not been able to identify this with precision.

## REFERENCES

- <sup>1</sup> C.E. Hart, *The Industrial History of Dean*, David & Charles, Newton Abbot, 1971
- <sup>2</sup> Charles Heath, *Excursion Down the Wye*, Monmouth, 1808
- <sup>3</sup> John Lloyd, *The Early History of the Old South Wales Iron Works, 1760-1840*, London, 1906
- <sup>4</sup> Heath, *op cit*
- <sup>5</sup> *Gloucester J*, 13 May & 24 June 1811, 13 April 1812 & 27 March 1815
- <sup>6</sup> H.W. Paar, 'The locks on the River Wye', *J Railway & Canal Hist Soc*, 20, 1974, pp61-6
- <sup>7</sup> *Ibid*
- <sup>8</sup> Plan of '... part of the RIVER WYE at NEW WEAR', surveyed in 1779 by R. Whitworth, Hereford County Record Office, ref T90
- <sup>9</sup> William Rees, *Industry Before the Industrial Revolution*, Cardiff, 1968
- <sup>10</sup> H.G. Nicholls, *The Forest of Dean*, 1858; reprinted by David & Charles, Newton Abbot, 1966
- <sup>11</sup> K.E. Kissack, *Monmouth: the Making of a County Town*, Phillimore, Chichester, 1975
- <sup>12</sup> H.R. Schubert, *History of the British Iron and Steel Industry*, Routledge & Kegan Paul, London, 1957
- <sup>13</sup> Wm Rees, *op cit*
- <sup>14</sup> Nicholls, *op cit*
- <sup>15</sup> Schubert, *op cit*
- <sup>16</sup> *Ibid*
- <sup>17</sup> H.W. Paar, *The Severn and Wye Railway*, David & Charles, Dawlish, 1963
- <sup>18</sup> *Anon A Tour in Wales*, Richard Phillips, London, 1806 (p25)
- <sup>19</sup> As ref 17
- <sup>20</sup> As ref 12
- <sup>21</sup> H.C.B. Mynors, 'Iron manufacture under Charles II', *Trans Woolhope Club*, 1952, pp3-8

## Ruardean Mill: a possibly unique, but puzzling case

There was probably a mill at Ruardean for many centuries, for in 1376-7, Alexander Carent had a mill there, and his son John Carent had it in 1382-3.<sup>1</sup> In 1795 there was a mill in Ruardean which had a special feature that was very unusual and possibly unique, namely, that a water engine was used to pump water from the tail race back to the mill pond. This is discussed further below. However, the Tithe Map of 1840 shows no corn mill anywhere in the parish of Ruardean, no Ordnance Survey map shows one, nor has any other map been found which shows one. In 1817, Mary Meek, 'late of Ruardean, Miller and Shopkeeper', was a prisoner for debt.<sup>2</sup> It seems probable, therefore, that the mill had ceased work by around 1815.

The 1795 reference was a Royal Exchange Fire Insurance policy.<sup>3</sup> The following is a transcription of it.

Jno. Bedford of Adferton in the Co. of Hereford as Mortgagee.	
On a Water Grist Mill House Stone & tiled sit. at Ruardean in the Co. of Gloucester	[£ understood] 100
On the Water Wheel Standing & Going Gears, Mill Stones, Wire Machines & Dressing Mills belg.	150
On stock and Utensils inclg. Boulting Cloths, Sacks and other moveable Utensils in the same	50
On a Small Water Engine erected below the Mill for the Purpose of throwing the Water back again in to the Mill Pond including Pumps, Cranks and other Machinery	30
On a Building Stone and tiled in which the above Engine is erected	20
Warranted to have no Kiln in the Premises	

£350

It is quite clear that 'Water Engine' is not a clerk's error for 'steam engine', because in a fire insurance policy mention would be made of

the boiler and firegrate if a steam engine had been involved (note the warranty that there was no kiln). What sort of water engine could it have been? The hydraulic ram had not been invented,<sup>4</sup> and there would hardly have been sufficient head for the operation of a water-pressure engine. A water-balance engine would have been possible, but the reference to 'Cranks' suggests it might have been a simple waterwheel, for no reciprocating device such as a water-balance engine would have needed cranks to operate pumps; only a rotative device would have needed them. No device working *below* the mill, and presumably using the tail water, could have returned more than a small proportion of the water to the head-race or mill pond. Yet to obtain this small augmentation of the water supply, this machinery and its stone-built building, valued together at one-sixth of the value of the mill and all its machinery, was considered worthwhile. It is clear that water was in desperately short supply. This is consistent with the inference from the wording of the policy that the mill was in Ruardean village itself and not elsewhere in the parish, for Ruardean is high on the headwaters of the Lodgegrove Brook and the stream is a very small one.

It has proved impossible to determine precisely where the mill was situated. Some possibilities arise from a consideration of features on the ground, or shown on maps. These features are:

a A waterfall on the stream at SO 618(5)178, which would have been a good site, and where there are even today some stone blocks in the waterfall. But the ground gives no indication of having had a building there, although a flattened area at the level of the top of the fall might have been a small mill pond. Nothing is shown at this point on any of the maps we have seen.

b A small building about 100yd below the waterfall, at SO 618179, marked on the Tithe Map but not referred to in the Apportionments. The footings of a building still remain in this place. If this was the building of the Tithe Map, it would have been too small for a mill, but it could conceivably have been the water-engine house, although its distance from the fall makes this unlikely. However, it does lie below the point where the outlet from the pond by the church (see d below) joins the brook, so that additional water was available here if this channel existed in 1795.

c A small pond at SO 619176, just adjacent to the north-eastern corner of the now-derelict chapel, and on the site now occupied by public conveniences. This pond adjoined the southern side of the road, and on the opposite side of the road, where the land begins to fall away, is an apparently artificially-lowered small rectangular site, now a garden, which was occupied by a 'building' (as distinct from 'cottages' nearby) on the Tithe Map. The pond was only about 50ft square, but it could have been the mill pond and the 'building' could have been the mill; there would have been sufficient head for an undershot or low-breast wheel.

d A pond at SO 620(5)177, just below and to the west of the parish church (St John Baptist). This pond is formed by a stone-faced dam some 8ft wide and 80-90ft long; it does not now hold water as the dam is breached, perhaps where a sluice-gate used to be. The water

runsdwn a roughly-eroded channel (not marked on the old maps) to join the main stream below the waterfall, as mentioned above. This clearly was not a mill pond in the ordinary sense, but may have been a storage pond to help a mill lower down.

Altitudes are: **d** 650ft, **c** 645ft, **a** around 580ft, and **b** around 530ft.

It is possible that **c** was an ordinary village pond used for watering horses, and **d** an ordinary farm pond. They were both shown on the Tithe Map and on the 25in OS map of 1879.

With such restricted water supplies, it might be wondered if an elevated village such as Ruardean would not have been better served by a windmill. They were almost certainly two windmills, for the Tithe Map shows a field at about SO 615172 called 'Windmill', and another at around SO 630173 which was called 'Windmill Hill'.

## REFERENCES

- <sup>1</sup> Samuel Rudder, *A New History of Gloucestershire*, 1779, p635
- <sup>2</sup> *London Gazette*, 12 July 1817, quoted by H.E.S. Simmons in Simmons Papers in Science Museum Library, London
- <sup>3</sup> Royal Exchange Fire Insurance Policy No 145663 dated 19 June 1795, now held at the Guildhall Library, London. Simmons' notes drew our attention to it
- <sup>4</sup> The hydraulic ram was invented in 1796 according to I. McNeil, *Hydraulic Engineering*, Longmans, London, 1972.

---

## Index

---

Where the number is in **bold type**, it indicates the reference number of the mill or the name of the miller.

Abbey Mill, **113**  
Acknowledgements, 3  
Alfords Mill, **82**, 31  
Area served by mills, 5  
Arkstone Mill, **116**, 40  
Anchor Inn, 61  
Anvils, 58

## B

Bage Mill, **120**, 42, 43, 44  
Bakehouse, 13, 25  
Bakery oven, 17  
Barber, Alfred, **134**  
Barrel, Chas, **37**  
Bayliss, Wm, **149**  
Beavan, Chas, **112**, **114**  
Beavan, Wm, **95**, **121**  
Bedford, Jno, 64  
Beevan, A., **120**  
Bennett, **89**  
Bernithan Court, 17, 18  
Bill Mill, **60**, 25  
Bishopswood Corn Mill, **54**  
Bishopswood Furnace, **53**, 62  
Blake Bros, 14  
Bone crushing mill, 32  
Boucher, B., **149**  
Boulter, 42, 51  
Boundary Mill, **4**

Bowen, Chas, **149**  
Bradleys Mill, **129**  
Bradshaw, John, **120**  
Breakwell, J., **3**  
Brewer, A., **35**  
Bright, Thos, **60**  
Brookend Mill, **66**  
Buckholt Mill, **3**  
Buckholt Old Mill, **4**  
Burdock, Thomas, **52**  
Burton Mill, **72**, 27, 28  
Bussell, **66**  
Bussell, W.H. & H.T., **58**

## C

Cabalva Mill, **139**  
Cagebrook Mill, **114**  
Caldicott, E., **35**  
Caldicott, Edward, **37**  
Carent, Alexander and John, 64  
Carey (Ironworks), 62  
Carey Mill, **92**  
Castle Mill, **104**  
Chase Mill, **67**  
Clock Mill, **135**  
Clyro Mill, **141**  
Coleman, Mrs J., 20  
Cooke, G., **121**  
Cooper, Alfred, **51**

opner, W. and Justice, **41**  
orcoran, **27**  
orn Mill, **44, 51**  
ottrell, Herbert J., **114**  
oughton Mill, **58**  
redenhill Mil, **107**  
roft, Jas, **102**  
usop Mill, **149, 52**

andy, John, **95**  
avies, A.E., **53**  
avies, John, **121**  
eacon's Mill, **31**  
igwood, John, **89**  
inedor Mill, **95**  
isc grinder, **7**  
ixton Mill, **1**  
omesday Survey, **6, 8**  
uggan, **134**

aton, Wm, **95**  
dwards, C., **72**  
dwards, John, **135**  
dwards, Thos, **13**  
gn Mill, **99**  
liotts, C., **27**  
gines Steam, **22, 23, 24, 26, 58, 61**  
ngine Water, **64**  
vans, Reece, **135**

arm Mill, **98**  
arm Mills, **8, 17, 24, 35, 37, 47, 51**  
arm wheel, **137**  
elds Mill, **118, 41**  
elds Place Mill, **119**  
lter station, **10**  
ley, **58**  
orge, **5, 10, 22, 54, 55, 56, 57, 58, 61, 62**  
orge Hammer Inn, **58**  
orty, James and George, **72**  
xhall Mill, **69**  
ourteenth Century mills, **7**  
xley Estate, **38**  
ome river, **5**  
lling, **22, 49**  
rnace, **19, 23, 54, 57, 58, 62**

## G

Gammon, Thos, **76**  
Goulding, Henry, **37**  
Grey Mill, **81**  
Griffiths, Joseph, **82**  
Griffiths, T., **25**  
Griffiths, W., **125**  
Grisman, Richard, **102**

## H

Hadley, Thos, **149**  
Hall, Clement, **58**  
Hardwick, Mill, **144**  
Harris, Wm, **135**  
Hart, Henry, **66**  
Hay Mill, **146**  
Hiles, G., **95**  
Hines, Francis, **110**  
Hoarwithy Mill, **86, 32, 33, 34**  
Hockley, T., **93**  
Hooper, Passey and, Charles and Mrs Mary, **79**  
Hope, James, **58**  
Hopes Ash Farm Mill, **61**  
How Caple Mill, **79**  
Howell, James, **104**  
Howell, Wm, **58**  
Howells, John, **104**  
Howells, Wm, **13**  
Huxhams and Brown, **37**  
Hydraulic ram, **17, 65**

## I

Industrial sites, **20**  
Introduction, **5**  
Iron/Tinplate Works, **46, 61**  
Iron Works, **8, 10, 22, 54-58, 61, 62**  
Ironworks, **49, 61**  
Isaac, Jas and Wm Jas, **99, 100**

## J

James, B., **89**  
James, John, **149**  
James, T., **35**  
Jenkins family, **9**  
Jenkins, John C., **135**  
Jones, G., W., Daniel and J., **121**  
Jones, Wm, **110, 135**

Jones, Wm and David, **134**  
Jones, Wm, James and Geo, **114**  
Jordan, John, **66**  
Joseph, Geo, **20**  
Joyford Mill, **41**

## K

Keddle, Alfred Thos, **27**  
Kenchester Mill, **108**  
Kings Howebrooke Forge, **51**  
Kington Foundry, **45**  
Knottley, Chas, **25**

## L

Lady's Mill, **36**  
Langstone Mill, **25**  
Leather mill, **36**  
Lenaston Mill, **29**  
Lewis, Edward, **108**  
Lewis family, **115**  
Lewis, Mrs, **26**  
Lewis, Richard, **25**  
Lewis, Thos, **89, 95**  
Lewstone Mill, **9, 11, 12**  
Linton (Ironworks), **62**  
Little, E. & Sons, **45**  
Littles Mill, **45**  
Llangwathan Mill, **151**  
Lloyd, J., **35**  
Lloyd, James, **135**  
Lloyd, J.G., **13**  
Lloyd, Joseph, **60**  
Locks navigational, **5, 54, 55, 56**  
Lower Cleeve Mill, **62**  
Lower Mill, **28, 33, 73, 148**  
Lower or Lydbrook Forge, **43**  
Lugg river, **5**  
Lydbrook Valley, **20**  
Lydiart-y-Waun Farm Mill, **147, 49, 50, 51**

## M

Mansell Mill, **109**  
Mathews, J., **58**  
Maxfield, E., **21**  
Maxfield, Edward, **25**  
Mayo, Frederick and Edmund, **7**  
Meek, Mary, **64**  
Michaelchurch Mill, **26**

Middle Forge/Tinplate Works, **47, 62**  
Middle Mill, **88, 36**  
Middlewood Mill, **136**  
Millichamp, Geo R., **114**  
Mill (near Newchurch), **128**  
Mill (near Orcop), **38**  
Mill (Old Mill), **76**  
Mill (Parish of Dinedor), **96**  
Mill (Parish of Kinnersley), **126**  
Mineral-water factory, **24**  
Monkmoor Mill, **101**  
Moore, James and Herbert, **114**  
Moraston House and Farm, **26**  
Morgan, James, **21**  
Morgan, John, James and Philip, **65**  
Morgan, T., **35**

## N

New Court Farm, **13**  
New Mill, **90, 115, 39**  
Newton Forge, **2**  
New Weir Forge, **6, 10, 55**  
Notley, Chas, **21**  
Nupend Mill, **93**

## O

Oil engine, **24**  
Old Forge, **10, 57**  
Old Forge Corn Mill, **11**  
Old Furnace, **34, 58**  
Old Mill (Goodrich), **13, 13, 14**  
One Mill, **65**  
Orcop Mill, **37**  
Osborne, Mrs, **56**  
Osmond iron, **58, 61**

## P

Paper Mill, **150**  
Paper Mill (Old Furnace), **19**  
Paper Mill (Probable), **18**  
Paper mills, **8, 24, 32, 53**  
Parker, Richard, **60**  
Partridge, John and William, **6, 55, 56**  
Passey, **79**  
Passey, Reuben, **82**  
Phelps, H., **57**  
Pig iron, **55, 62**  
Pike, **66**

Pool Mill, 63  
Possible mill sites, 16, 24, 30, 32, 39, 40, 42,  
59, 63, 70, 71, 77, 80, 84, 85, 94, 103, 117, 122,  
123, 124, 127, 131, 132, 133, 136, 139, 142, 144,  
145, 151  
Powell, John, 135  
Powell, Thos, 11, 102  
Preece, James, 86  
Preece, John, 19  
Preface, 4  
Preston, Mill, 121  
Price, J., 82  
Price, Geo, Chas and Wm, 125  
Price, W. or Preece, 20  
Price, Wm, 134  
Probable mill sites, 18, 78, 143  
Probert, Thos, 45  
Prosser, Mrs M., 79  
Prosser, Job, 65  
Prosser, Thos, 25  
Prothither Mill, 89  
Pumps waterwheel, 8

## R

Rea Wm, 58  
Read, Mrs M., 79  
Reed, John, 82  
Rees, Wm, 8  
References, 9, 63, 66  
Rhydycar Mill, 35  
Roberts, E. & R., 12  
Roberts, Richard and Henry, 27  
Robinson system, 26  
Rollesford Mill, 122  
Ross (ironworks), 62  
Rowse, Henry, 114  
Ruardean Mill, 55, 64  
Ruckhall Mill, 112  
Rudhall Mill, 68  
Russell, J., 135

## S

Saunders & Co, 100  
Saunders, Jos, 35  
Saw Mill, 110A  
Saw Mills, 23, 38, 46, 51  
Scudamore, Sir John, 62  
Scut Mill, 125  
Scutt Mill, 100  
Seal, Elizabeth and Thos, 89

Seal, Samuel, 114  
Severn and Wye Railway, 62  
Siphon pipe, 23  
Slade, Wm, 93  
Smith, Richard, 125  
Smith, Robert, 57  
Smith, Thos Hiles, 93  
Smith, Wm, 58  
St Tysiliog's Church, 30  
Steam engine, 22, 23, 24, 26, 58, 61  
Steel Works Farm, 62  
Stretton Court Farm Mill, 105  
Stewart, Edward S., 121

## T

Tars Mill, 97  
Taylor, John, 20  
Textile mills, 8, 22  
The Mills, 56  
Tibberton Mill, 123  
Tinplate works, 22, 58, 61  
Tintern, 61  
Tippins, Geo, 3  
Tipton, R., 121  
Town Mill, 66  
Trecece Mill, 21, 15, 16, 17  
Tresch Mill, 87  
Tretire Mill, 27, 21  
Treverven Mill, 20  
Trill Mill, 91  
Tuck Mill, 19, 32, 59, 111  
Tudor, Wm, 134  
Turbine, 38, 52

## U

Underhill, Mr, 49  
Upper Forge, 50, 62  
Upper Mill, 74, 110, 134, 46

## V

Vaughan, T., 108

## W

Waite, 3  
Walford Mill, 57  
Warren Mill, 75

Water engine, 64  
Waterloo Corn Mill, 52, 23  
Waterwheel pumps, 12, 14, 15, 17, 22, 23, 64,  
106, 119, 130  
Welsh Newton Mill, 5  
Went, John and Herbert, 35  
Wheatstone, Wm, 95  
Wheeler, Chas and Wm T., 120  
Wheeler, John, Jonathan and Mrs J. & E., 86  
Wheeler and Parry, 13  
Wheeler, Richard, 114  
Wheeler, Thos and R., 27, 112  
Whitchurch Mill, 7 or milln, 8  
White, George, 6  
White, T., 37  
Whitebrook, 61  
Whitley's Mill, 140

Whitney Mill, 138, 47  
Whittingslow, J. & Mrs E., 110  
Widemarsh Mill, 102  
Wilkinson, Wm, 149  
Windmill, 44, 66  
Winnall, Thos Junr, 72  
Winslow Mill, 83  
Wintle, Alfred John and Sons, 60  
Wireworks, 48, 58, 61  
Wood-working, 12, 23  
Woollen mill, 36

## Y

Yates, David, 72